

Product datasheet for **TA324829S**

MEF2C Rabbit Polyclonal Antibody

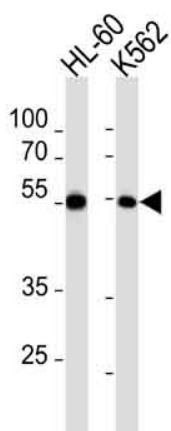
Product data:

Product Type:	Primary Antibodies
Applications:	IF, IHC, WB
Recommended Dilution:	WB: 1:1000, IF: 1:10~50, IHC: 1:10~50
Reactivity:	Human (Predicted: Pig)
Host:	Rabbit
Isotype:	IgG
Clonality:	Polyclonal
Immunogen:	This MEF2C antibody is generated from rabbits immunized with a KLH conjugated synthetic peptide between 365-394 amino acids from human MEF2C.
Formulation:	Purified polyclonal antibody supplied in PBS with 0.09% (W/V) sodium azide.
Concentration:	lot specific
Purification:	This antibody is purified through a protein A column, followed by peptide affinity purification.
Conjugation:	Unconjugated
Storage:	Store at -20°C as received.
Stability:	Stable for 12 months from date of receipt.
Predicted Protein Size:	51221 Da
Gene Name:	myocyte enhancer factor 2C
Database Link:	NP_002388 Entrez Gene 4208 Human Q06413
Synonyms:	C5DELq14.3; DEL5q14.3
Protein Families:	Transcription Factors
Protein Pathways:	MAPK signaling pathway

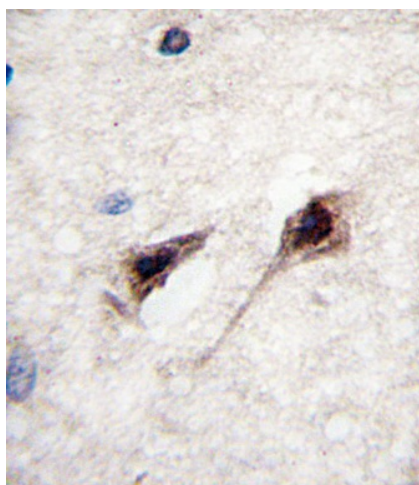


[View online »](#)

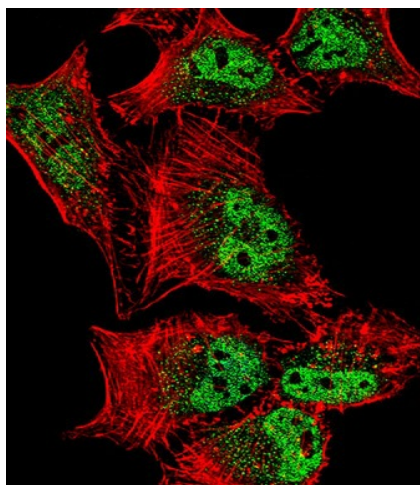
Product images:



MEF2C Antibody (pS387) (Cat. #[TA302220]) western blot analysis in HL-60, K562 cell line lysates (35ug/lane). This demonstrates the MEF2C antibody detected the MEF2C protein (arrow).



Formalin-fixed and paraffin-embedded human brain tissue reacted with MEF2C Antibody (S387) (Cat.#[TA302220]), which was peroxidase-conjugated to the secondary antibody, followed by DAB staining. This data demonstrates the use of this antibody for immunohistochemistry; clinical relevance has not been evaluated.



IF image of HeLa cell stained with MEF2C Antibody (S387) (Cat#[TA302220]). HeLa cells were incubated with MEF2C primary antibody (1:25, 1 h at 37°C). For secondary antibody, Alexa Fluor® 488 conjugated donkey anti-rabbit antibody (green) was used (1:400). Cytoplasmic actin was counterstained with Alexa Fluor® 555 (red) conjugated Phalloidin (7 units/ml). Nuclei were counterstained with DAPI (blue). MEF2C immunoreactivity is localized to vesicles and Nucleus significantly.