

## Product datasheet for **TA324827S**

### AGR2 Rabbit Polyclonal Antibody

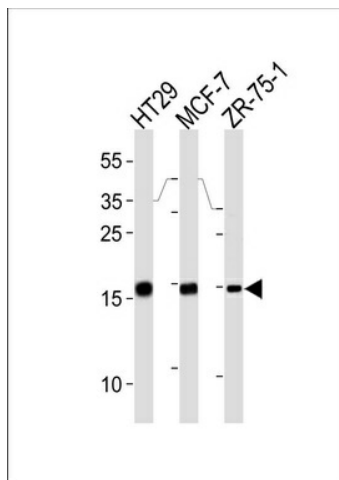
#### Product data:

Product Type:	Primary Antibodies
Applications:	IF, IHC, WB
Recommended Dilution:	WB: 1:1000, IF: 1:10~50, IHC: 1:10~50
Reactivity:	Human
Host:	Rabbit
Isotype:	IgG
Clonality:	Polyclonal
Immunogen:	This Anterior Gradient 2 (AGR2) antibody is generated from rabbits immunized with a KLH conjugated synthetic peptide between 13-42 amino acids from the N-terminal region of human Anterior Gradient 2 (AGR2).
Formulation:	Purified polyclonal antibody supplied in PBS with 0.09% (W/V) sodium azide.
Concentration:	lot specific
Purification:	This antibody is prepared by Saturated Ammonium Sulfate (SAS) precipitation followed by dialysis against PBS.
Conjugation:	Unconjugated
Storage:	Store at -20°C as received.
Stability:	Stable for 12 months from date of receipt.
Predicted Protein Size:	19979 Da
Gene Name:	anterior gradient 2, protein disulphide isomerase family member
Database Link:	<a href="#">NP_006399</a> <a href="#">Entrez Gene 10551 Human</a> <a href="#">O95994</a>
Synonyms:	AG2; GOB-4; HAG-2; HEL-S-116; PDIA17; XAG-2
Protein Families:	Secreted Protein

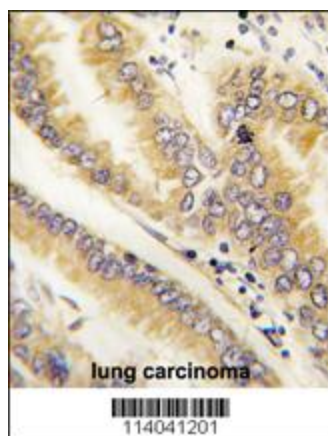


[View online »](#)

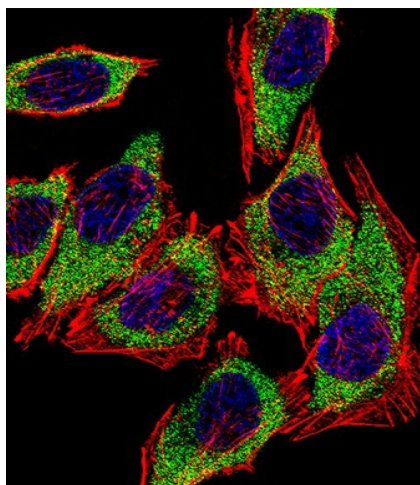
## Product images:



AGR2 Antibody (N-term) (Cat. #[TA324827]) western blot analysis in HT29, MCF-7, ZR-75-1 cell line lysates (35ug/lane). This demonstrates the AGR2 antibody detected the AGR2 protein (arrow).



Formalin-fixed and paraffin-embedded human lung carcinoma tissue reacted with AGR2 antibody (N-term) (Cat.#[TA324827]), which was peroxidase-conjugated to the secondary antibody, followed by DAB staining. This data demonstrates the use of this antibody for immunohistochemistry; clinical relevance has not been evaluated.



IF image of A549 cell stained with AGR2 Antibody (N-term) (Cat#[TA324827]). A549 cells were incubated with AGR2 primary antibody (1:25, 1 h at 37°C). For secondary antibody, Alexa Fluor® 488 conjugated donkey anti-rabbit antibody (1:400). Cytoplasmic actin was counterstained with Alexa Fluor® 555 (red) conjugated Phalloidin (7 units/ml). Nuclei were counterstained with DAPI (blue). AGR2 immunoreactivity is localized to Cytoplasm significantly.