

Product datasheet for **TA324826S**

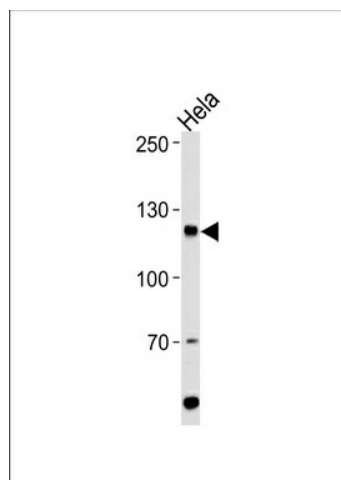
HIRA Rabbit Polyclonal Antibody

Product data:

Product Type:	Primary Antibodies
Applications:	WB
Recommended Dilution:	WB: 1:1000
Reactivity:	Human (Predicted: Mouse, Chicken, Xenopus)
Host:	Rabbit
Isotype:	IgG
Clonality:	Polyclonal
Immunogen:	This HIRA antibody is generated from rabbits immunized with a KLH conjugated synthetic peptide between 431-461 amino acids from the Central region of human HIRA.
Formulation:	Purified polyclonal antibody supplied in PBS with 0.09% (W/V) sodium azide.
Concentration:	lot specific
Purification:	This antibody is prepared by Saturated Ammonium Sulfate (SAS) precipitation followed by dialysis against PBS.
Conjugation:	Unconjugated
Storage:	Store at -20°C as received.
Stability:	Stable for 12 months from date of receipt.
Predicted Protein Size:	111835 Da
Gene Name:	histone cell cycle regulator
Database Link:	NP_003316 Entrez Gene 15260 Mouse Entrez Gene 7290 Human P54198
Synonyms:	DGCR1; TUP1; TUPLE1
Protein Families:	Transcription Factors



[View online »](#)

Product images:

HIRA Antibody (Center) (Cat. #[TA324826])
western blot analysis in HeLa cell line lysates
(35ug/lane). This demonstrates the HIRA antibody
detected the HIRA protein (arrow).