

Product datasheet for **TA324826**

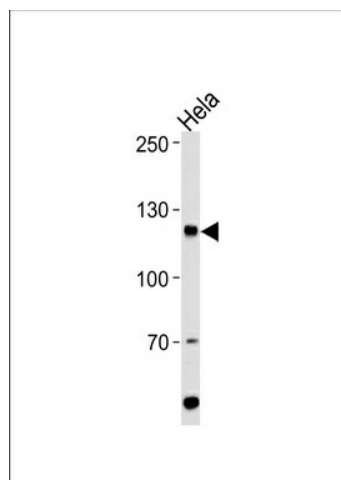
HIRA Rabbit Polyclonal Antibody

Product data:

| | |
|-------------------------|---|
| Product Type: | Primary Antibodies |
| Applications: | WB |
| Recommended Dilution: | WB: 1:1000 |
| Reactivity: | Human (Predicted: Mouse, Chicken, Xenopus) |
| Host: | Rabbit |
| Isotype: | IgG |
| Clonality: | Polyclonal |
| Immunogen: | This HIRA antibody is generated from rabbits immunized with a KLH conjugated synthetic peptide between 431-461 amino acids from the Central region of human HIRA. |
| Formulation: | Purified polyclonal antibody supplied in PBS with 0.09% (W/V) sodium azide. |
| Concentration: | lot specific |
| Purification: | This antibody is prepared by Saturated Ammonium Sulfate (SAS) precipitation followed by dialysis against PBS. |
| Conjugation: | Unconjugated |
| Storage: | Store at -20°C as received. |
| Stability: | Stable for 12 months from date of receipt. |
| Predicted Protein Size: | 111835 Da |
| Gene Name: | histone cell cycle regulator |
| Database Link: | NP_003316 Entrez Gene 15260 Mouse Entrez Gene 7290 Human P54198 |
| Synonyms: | DGCR1; TUP1; TUPLE1 |
| Protein Families: | Transcription Factors |



[View online »](#)

Product images:

HIRA Antibody (Center) (Cat. #TA324826) western blot analysis in HeLa cell line lysates (35ug/lane). This demonstrates the HIRA antibody detected the HIRA protein (arrow).