

## Product datasheet for **TA324825**

### p53 (TP53) Rabbit Polyclonal Antibody

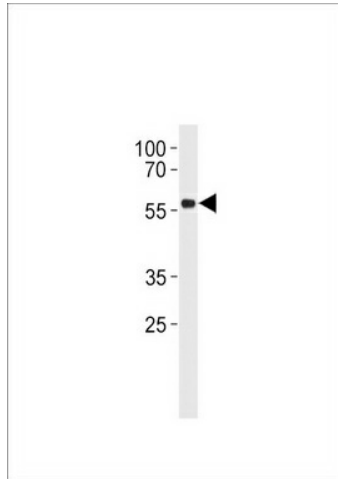
#### Product data:

|                         |   |
|-------------------------|---|
| Product Type:           | Primary Antibodies  |
| Applications:           | IF, IHC, WB   |
| Recommended Dilution:   | WB: 1:1000, IHC: 1:10~50, IF: 1:10~50   |
| Reactivity:             | Human (Predicted: Monkey)   |
| Host:                   | Rabbit  |
| Isotype:                | IgG   |
| Clonality:              | Polyclonal  |
| Immunogen:              | This p53 antibody is generated from rabbits immunized with a KLH conjugated synthetic peptide between 293-322 amino acids from human p53.   |
| Formulation:            | Purified polyclonal antibody supplied in PBS with 0.09% (W/V) sodium azide.   |
| Concentration:          | lot specific  |
| Purification:           | This antibody is purified through a protein A column, followed by peptide affinity purification.  |
| Conjugation:            | Unconjugated  |
| Storage:                | Store at -20°C as received.   |
| Stability:              | Stable for 12 months from date of receipt.  |
| Predicted Protein Size: | 43653 Da  |
| Gene Name:              | tumor protein p53   |
| Database Link:          | <a href="#">NP_000537</a><br><a href="#">Entrez Gene 716170 Monkey</a> <a href="#">Entrez Gene 7157 Human</a><br><a href="#">P04637</a>   |
| Synonyms:               | BCC7; LFS1; P53; TRP53  |
| Protein Families:       | Druggable Genome, Stem cell - Pluripotency, Transcription Factors   |
| Protein Pathways:       | Amyotrophic lateral sclerosis (ALS), Apoptosis, Basal cell carcinoma, Bladder cancer, Cell cycle, Chronic myeloid leukemia, Colorectal cancer, Endometrial cancer, Glioma, Huntington's disease, MAPK signaling pathway, Melanoma, Neurotrophin signaling pathway, Non-small cell lung cancer, p53 signaling pathway, Pancreatic cancer, Pathways in cancer, Prostate cancer, Small cell lung cancer, Thyroid cancer, Wnt signaling pathway |

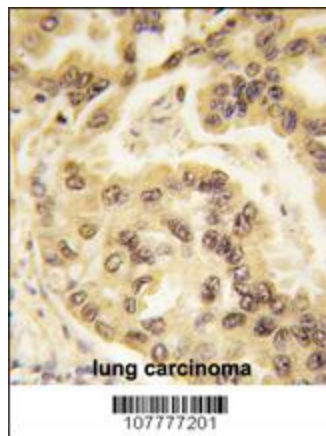


[View online »](#)

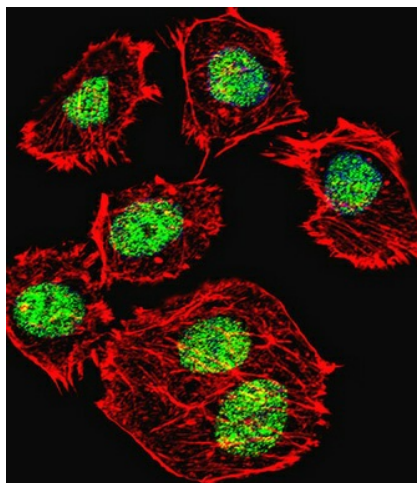
## Product images:



p53 Antibody (S315) (Cat. #TA324825) western blot analysis in Daudi cell line lysates (35ug/lane). This demonstrates the p53 antibody detected the p53 protein (arrow).



Formalin-fixed and paraffin-embedded human lung carcinoma tissue reacted with p53 Antibody (S315) (Cat.#TA324825), which was peroxidase-conjugated to the secondary antibody, followed by DAB staining. This data demonstrates the use of this antibody for immunohistochemistry; clinical relevance has not been evaluated.



IF image of U251 cell stained with p53 Antibody (S315) (Cat#TA324825). U251 cells were incubated with p53 primary antibody (1:25, 1 h at 37°C). For secondary antibody, Alexa Fluor® 488 conjugated donkey anti-rabbit antibody (green) was used (1:400). Cytoplasmic actin was counterstained with Alexa Fluor® 555 (red) conjugated Phalloidin (7 units/ml). Nuclei were counterstained with DAPI (blue). p53 immunoreactivity is localized to Nucleus significantly.