

## Product datasheet for **TA324822S**

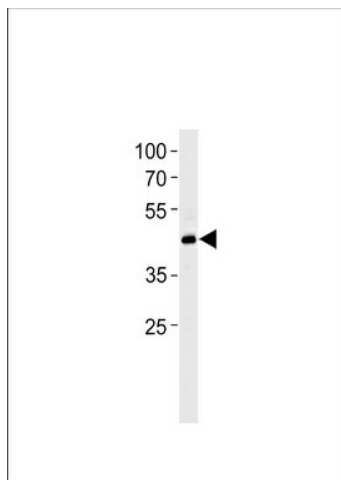
### FOXO4 Rabbit Polyclonal Antibody

#### Product data:

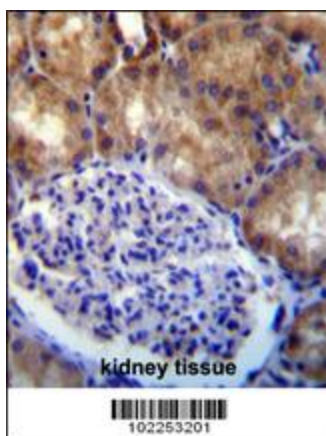
Product Type:	Primary Antibodies
Applications:	IHC, WB
Recommended Dilution:	WB: 1:1000, IHC: 1:10~50
Reactivity:	Human
Host:	Rabbit
Isotype:	IgG
Clonality:	Polyclonal
Immunogen:	This MLLT7 antibody is generated from rabbits immunized with a KLH conjugated synthetic peptide between 44-73 amino acids from the N-terminal region of human MLLT7.
Formulation:	Purified polyclonal antibody supplied in PBS with 0.09% (W/V) sodium azide.
Concentration:	lot specific
Purification:	This antibody is purified through a protein A column, followed by peptide affinity purification.
Conjugation:	Unconjugated
Storage:	Store at -20°C as received.
Stability:	Stable for 12 months from date of receipt.
Predicted Protein Size:	53684 Da
Gene Name:	forkhead box O4
Database Link:	<a href="#">NP_005929</a> <a href="#">Entrez Gene 4303 Human</a> <a href="#">P98177</a>
Synonyms:	AFX; AFX1; MLLT7
Protein Families:	Transcription Factors

[View online »](#)

## Product images:



MLLT7 Antibody (R59) (Cat. # [TA324822]) western blot analysis in Jurkat cell line lysates (35ug/lane). This demonstrates the MLLT7 antibody detected the MLLT7 protein (arrow).



MLLT7 antibody (N-term) (Cat. # [TA324822]) immunohistochemistry analysis in formalin fixed and paraffin embedded human kidney tissue followed by peroxidase conjugation of the secondary antibody and DAB staining. This data demonstrates the use of MLLT7 antibody (N-term) for immunohistochemistry. Clinical relevance has not been evaluated.