

## Product datasheet for **TA324821**

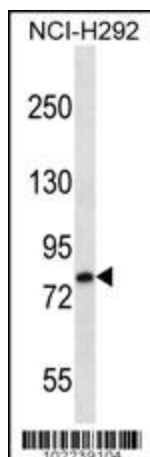
### LRP3 Rabbit Polyclonal Antibody

#### Product data:

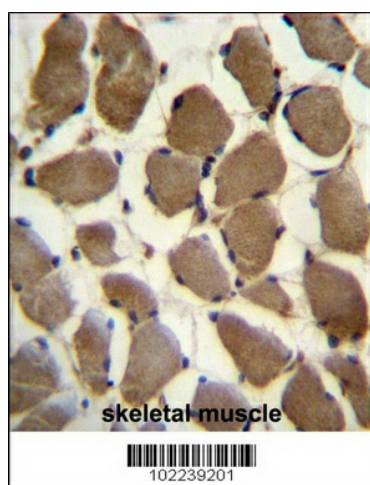
Product Type:	Primary Antibodies
Applications:	IHC, WB
Recommended Dilution:	WB: 1:1000, IHC: 1:10~50
Reactivity:	Human
Host:	Rabbit
Isotype:	IgG
Clonality:	Polyclonal
Immunogen:	This LRP3 antibody is generated from rabbits immunized with a KLH conjugated synthetic peptide between 661-692 amino acids from the C-terminal region of human LRP3.
Formulation:	Purified polyclonal antibody supplied in PBS with 0.09% (W/V) sodium azide.
Concentration:	lot specific
Purification:	This antibody is purified through a protein A column, followed by peptide affinity purification.
Conjugation:	Unconjugated
Storage:	Store at -20°C as received.
Stability:	Stable for 12 months from date of receipt.
Predicted Protein Size:	82884 Da
Gene Name:	LDL receptor related protein 3
Database Link:	<a href="#">NP_002324</a> <a href="#">Entrez Gene 4037 Human</a> <a href="#">O75074</a>
Synonyms:	low density lipoprotein receptor-related protein 3
Protein Families:	Druggable Genome, Transmembrane



[View online »](#)

**Product images:**

LRP3 Antibody (E676) (Cat.#TA324821) western blot analysis in NCI-H292 cell line lysates (35ug/lane). This demonstrates the LRP3 antibody detected the LRP3 protein (arrow).



LRP3 Antibody (C-term) (Cat.#TA324821) immunohistochemistry analysis in formalin fixed and paraffin embedded human skeletal muscle followed by peroxidase conjugation of the secondary antibody and DAB staining. This data demonstrates the use of LRP3 Antibody (C-term) for immunohistochemistry. Clinical relevance has not been evaluated.