

Product datasheet for **TA324820S**

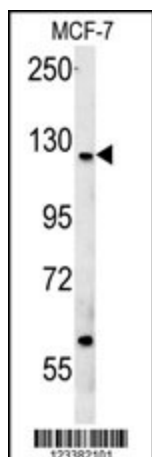
CUX1 Rabbit Polyclonal Antibody

Product data:

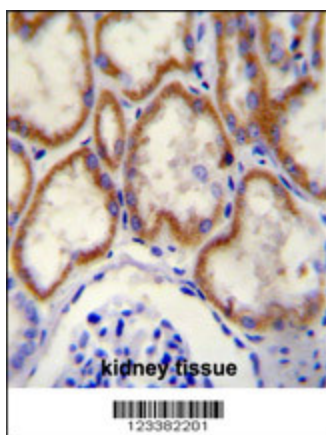
Product Type:	Primary Antibodies
Applications:	IF, IHC, WB
Recommended Dilution:	WB: 1:1000, IHC: 1:50~100, IF: 1:10~50
Reactivity:	Human
Host:	Rabbit
Isotype:	IgG
Clonality:	Polyclonal
Immunogen:	This CUX1 antibody is generated from rabbits immunized with a KLH conjugated synthetic peptide between 1347-1374 amino acids from the C-terminal region of human CUX1.
Formulation:	Purified polyclonal antibody supplied in PBS with 0.09% (W/V) sodium azide.
Concentration:	lot specific
Purification:	This antibody is purified through a protein A column, followed by peptide affinity purification.
Conjugation:	Unconjugated
Storage:	Store at -20°C as received.
Stability:	Stable for 12 months from date of receipt.
Predicted Protein Size:	164187 Da
Gene Name:	cut like homeobox 1
Database Link:	NP_853530 Entrez Gene 1523 Human Q13948
Synonyms:	CASP; CDP; CDP1; Clox; COY1; Cut; CUTL1; CUX; Cux; GOLIM6; Nbla10317; p100; p110; p200
Protein Families:	Transcription Factors, Transmembrane

[View online »](#)

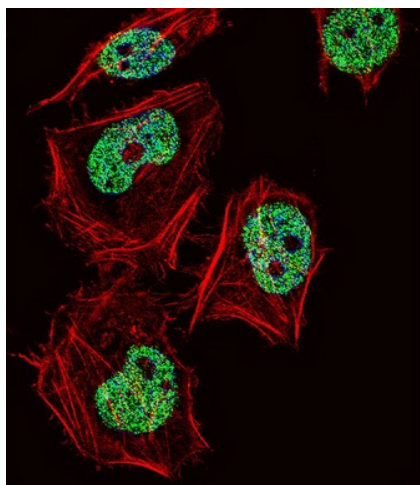
Product images:



CUX1 Antibody (C-term) (Cat. #TA324820S) western blot analysis in MCF-7 cell line lysates (35ug/lane). This demonstrates the CUX1 antibody detected the CUX1 protein (arrow).



CUX1 Antibody (C-term) (Cat. #TA324820S) immunohistochemistry analysis in formalin fixed and paraffin embedded human kidney tissue followed by peroxidase conjugation of the secondary antibody and DAB staining. This data demonstrates the use of the CUX1 Antibody (C-term) for immunohistochemistry. Clinical relevance has not been evaluated.



IF image of HeLa cell stained with CUX1 Antibody (C-term) (Cat#[TA324820]). HeLa cells were incubated with CUX1 primary antibody (1:25, 1 h at 37°C). For secondary antibody, Alexa Fluor® 488 conjugated donkey anti-rabbit antibody (green) was used (1:400). Cytoplasmic actin was counterstained with Alexa Fluor® 555 (red) conjugated Phalloidin (7 units/ml). Nuclei were counterstained with DAPI (blue). CUX1 immunoreactivity is localized to Nucleus significantly.