

## Product datasheet for **TA324819**

### NPAS2 Rabbit Polyclonal Antibody

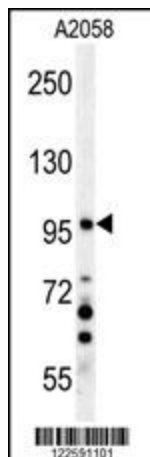
#### Product data:

Product Type:	Primary Antibodies
Applications:	IF, WB
Recommended Dilution:	WB: 1:1000, IF: 1:10~50
Reactivity:	Human, Mouse (Predicted: Chicken)
Host:	Rabbit
Isotype:	IgG
Clonality:	Polyclonal
Immunogen:	This NPAS2 antibody is generated from rabbits immunized with a KLH conjugated synthetic peptide between 1-30 amino acids from the N-terminal region of human NPAS2.
Formulation:	Purified polyclonal antibody supplied in PBS with 0.09% (W/V) sodium azide.
Concentration:	lot specific
Purification:	This antibody is purified through a protein A column, followed by peptide affinity purification.
Conjugation:	Unconjugated
Storage:	Store at -20°C as received.
Stability:	Stable for 12 months from date of receipt.
Predicted Protein Size:	91791 Da
Gene Name:	neuronal PAS domain protein 2
Database Link:	<a href="#">NP_002509</a> <a href="#">Entrez Gene 18143 Mouse</a> <a href="#">Entrez Gene 4862 Human</a> <a href="#">Q99743</a>
Synonyms:	bHLHe9; MOP4; PASD4
Protein Families:	Druggable Genome, Transcription Factors
Protein Pathways:	Circadian rhythm - mammal

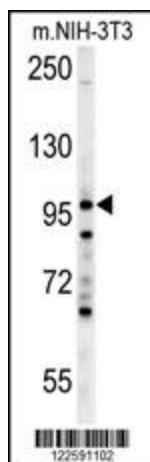


[View online »](#)

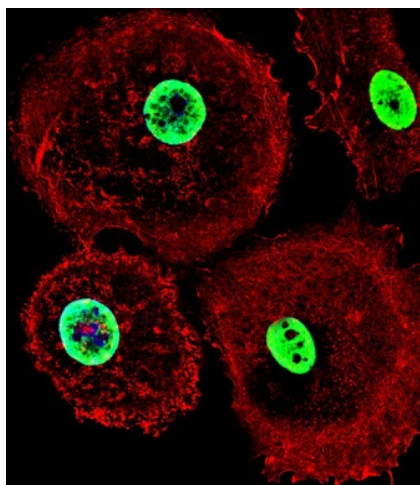
## Product images:



NPAS2 Antibody (N-term) (Cat. #TA324819) western blot analysis in A2058 cell line lysates (35ug/lane). This demonstrates the NPAS2 antibody detected the NPAS2 protein (arrow).



NPAS2 Antibody (N-term) (Cat. #TA324819) western blot analysis in mouse NIH-3T3 cell line lysates (35ug/lane). This demonstrates the NPAS2 antibody detected the NPAS2 protein (arrow).



IF image of MCF-7 cell stained with NPAS2 Antibody (N-term) (Cat#TA324819).MCF-7 cells were incubated with NPAS2 primary antibody (1:25, 1 h at 37°C). For secondary antibody, Alexa Fluor® 488 conjugated donkey anti-rabbit antibody (green) was used (1:400).Cytoplasmic actin was counterstained with Alexa Fluor® 555 (red) conjugated Phalloidin (7 units/ml). Nuclei were counterstained with DAPI (blue). NPAS2 immunoreactivity is localized to Nucleus significantly.