

Product datasheet for **TA324818S**

beta Synuclein (SNCB) Rabbit Polyclonal Antibody

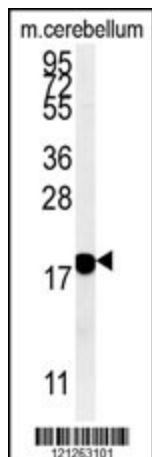
Product data:

Product Type:	Primary Antibodies
Applications:	IHC, WB
Recommended Dilution:	WB: 1:1000, IHC: 1:50~100
Reactivity:	Human, Mouse
Host:	Rabbit
Isotype:	IgG
Clonality:	Polyclonal
Immunogen:	This SNCB antibody is generated from rabbits immunized with a KLH conjugated synthetic peptide between 93-122 amino acids from the C-terminal region of human SNCB.
Formulation:	Purified polyclonal antibody supplied in PBS with 0.09% (W/V) sodium azide.
Concentration:	lot specific
Purification:	This antibody is purified through a protein A column, followed by peptide affinity purification.
Conjugation:	Unconjugated
Storage:	Store at -20°C as received.
Stability:	Stable for 12 months from date of receipt.
Predicted Protein Size:	14288 Da
Gene Name:	synuclein beta
Database Link:	NP_001001502 Entrez Gene 104069 Mouse Entrez Gene 6620 Human Q16143
Synonyms:	beta; beta-synuclein; synuclein

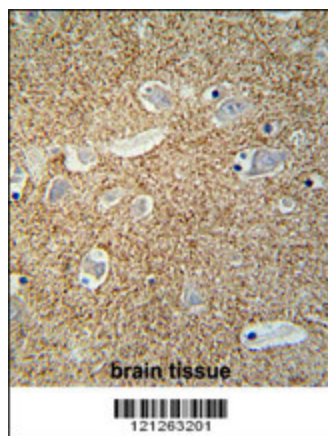


[View online »](#)

Product images:



SNCB Antibody (C-term) (Cat. #[TA324818]) western blot analysis in mouse cerebellum tissue lysates (15ug/lane). This demonstrates the SNCB antibody detected SNCB protein (arrow).



SNCB antibody (C-term) (Cat. #[TA324818]) immunohistochemistry analysis in formalin fixed and paraffin embedded human brain tissue followed by peroxidase conjugation of the secondary antibody and DAB staining. This data demonstrates the use of the SNCB antibody (C-term) for immunohistochemistry. Clinical relevance has not been evaluated.