

## Product datasheet for **TA324816**

### FOXP2 Rabbit Polyclonal Antibody

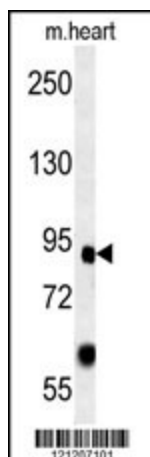
#### Product data:

Product Type:	Primary Antibodies
Applications:	IF, WB
Recommended Dilution:	WB: 1:1000, IF: 1:10~50
Reactivity:	Human, Mouse (Predicted: Rat)
Host:	Rabbit
Isotype:	IgG
Clonality:	Polyclonal
Immunogen:	This FOXP2 antibody is generated from rabbits immunized with a KLH conjugated synthetic peptide between 657-684 amino acids from the C-terminal region of human FOXP2.
Formulation:	Purified polyclonal antibody supplied in PBS with 0.09% (W/V) sodium azide.
Concentration:	lot specific
Purification:	This antibody is purified through a protein A column, followed by peptide affinity purification.
Conjugation:	Unconjugated
Storage:	Store at -20°C as received.
Stability:	Stable for 12 months from date of receipt.
Predicted Protein Size:	79919 Da
Gene Name:	forkhead box P2
Database Link:	<a href="#">NP_683698</a> <a href="#">Entrez Gene 114142 MouseEntrez Gene 500037 RatEntrez Gene 93986 Human O15409</a>
Synonyms:	CAGH44; SPCH1; TNRC10
Protein Families:	Transcription Factors

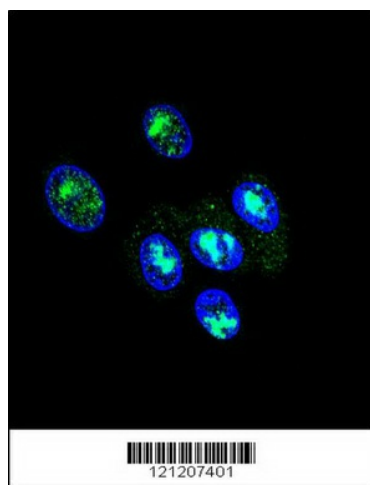


[View online »](#)

## Product images:



FOXP2 Antibody (C-term) (Cat. #TA324816) western blot analysis in mouse heart tissue lysates (15ug/lane). This demonstrates the FOXP2 antibody detected FOXP2 protein (arrow).



Confocal immunofluorescent analysis of FOXP2 Antibody (C-term) (Cat#TA324816) with HepG2 cell followed by Alexa Fluor<sup>®</sup> 488-conjugated goat anti-rabbit IgG (green). DAPI was used to stain the cell nuclear (blue).