

## Product datasheet for **TA324813S**

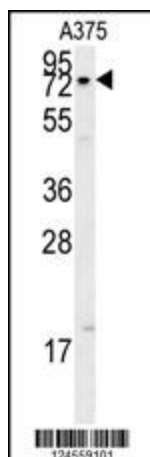
### XRCC1 Rabbit Polyclonal Antibody

#### Product data:

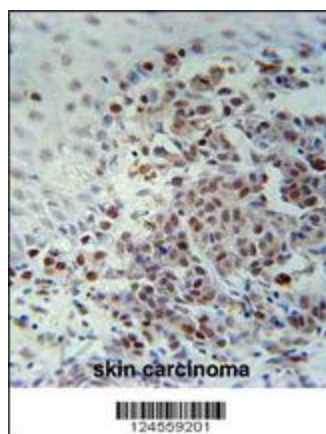
Product Type:	Primary Antibodies
Applications:	FC, IF, IHC, WB
Recommended Dilution:	IF: 1:25, WB: 1:1000, IHC: 1:50~100, FC: 1:10~50
Reactivity:	Human
Host:	Rabbit
Isotype:	IgG
Clonality:	Polyclonal
Immunogen:	This XRCC1 antibody is generated from rabbits immunized with a KLH conjugated synthetic peptide between 407-435 amino acids from the Central region of human XRCC1.
Formulation:	Purified polyclonal antibody supplied in PBS with 0.09% (W/V) sodium azide.
Concentration:	lot specific
Purification:	This antibody is purified through a protein A column, followed by peptide affinity purification.
Conjugation:	Unconjugated
Storage:	Store at -20°C as received.
Stability:	Stable for 12 months from date of receipt.
Predicted Protein Size:	69477 Da
Gene Name:	X-ray repair complementing defective repair in Chinese hamster cells 1
Database Link:	<a href="#">NP_006288</a> <a href="#">Entrez Gene 7515 Human</a> <a href="#">P18887</a>
Synonyms:	RCC
Protein Families:	Druggable Genome
Protein Pathways:	Base excision repair



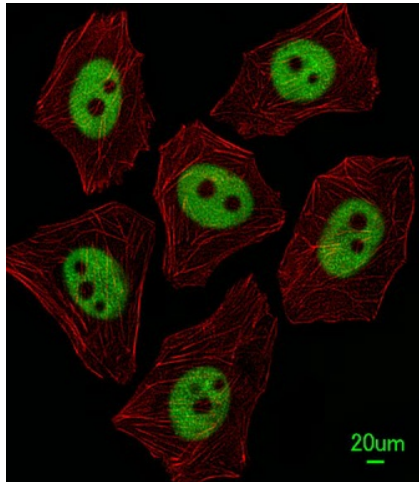
[View online »](#)

**Product images:**

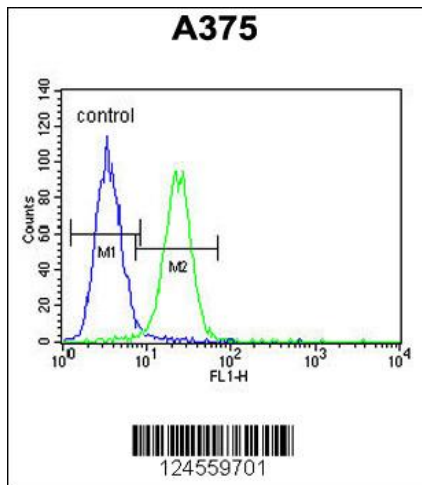
XRCC1 Antibody (Center) (Cat. #[TA324813]) western blot analysis in A375 cell line lysates (15ug/lane). This demonstrates the XRCC1 antibody detected the XRCC1 protein (arrow).



XRCC1 Antibody (Center) (Cat. #[TA324813]) immunohistochemistry analysis in formalin fixed and paraffin embedded human skin carcinoma followed by peroxidase conjugation of the secondary antibody and DAB staining. This data demonstrates the use of the XRCC1 Antibody (Center) for immunohistochemistry. Clinical relevance has not been evaluated.



Immunofluorescent analysis of A549 cells, using XRCC1 Antibody (Center) (Cat. #[TA324813]). [TA324813] was diluted at 1:25 dilution. Alexa Fluor 488-conjugated goat anti-rabbit IgG at 1:400 dilution was used as the secondary antibody (green). Cytoplasmic actin was counterstained with Dylight Fluor® 554 (red) conjugated Phalloidin (red).



XRCC1 Antibody (Center) (Cat. #[TA324813]) flow cytometric analysis of A375 cells (right histogram) compared to a negative control cell (left histogram). FITC-conjugated goat-anti-rabbit secondary antibodies were used for the analysis.