

Product datasheet for **TA324811**

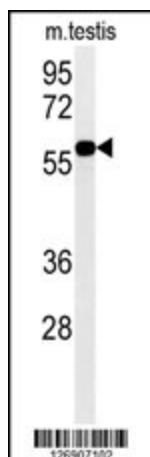
DKC1 Rabbit Polyclonal Antibody

Product data:

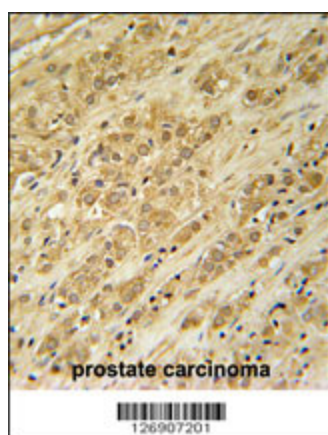
Product Type:	Primary Antibodies
Applications:	IF, IHC, WB
Recommended Dilution:	WB: 1:1000, IHC: 1:50~100, IF: 1:10~50
Reactivity:	Human, Mouse
Host:	Rabbit
Isotype:	IgG
Clonality:	Polyclonal
Immunogen:	This DKC1 antibody is generated from rabbits immunized with a KLH conjugated synthetic peptide between 185-213 amino acids from the Central region of human DKC1.
Formulation:	Purified polyclonal antibody supplied in PBS with 0.09% (W/V) sodium azide.
Concentration:	lot specific
Purification:	This antibody is purified through a protein A column, followed by peptide affinity purification.
Conjugation:	Unconjugated
Storage:	Store at -20°C as received.
Stability:	Stable for 12 months from date of receipt.
Predicted Protein Size:	57674 Da
Gene Name:	dyskerin pseudouridine synthase 1
Database Link:	NP_001135935 Entrez Gene 245474 Mouse Entrez Gene 1736 Human O60832
Synonyms:	CBF5; DKC; DKCX; NAP57; NOLA4; XAP101
Protein Families:	Druggable Genome



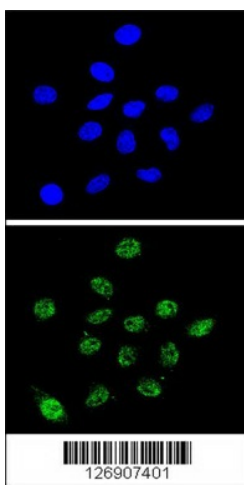
[View online »](#)

Product images:

DKC1 Antibody (Center) (Cat.#TA324811) western blot analysis in mouse testis tissue lysates (35ug/lane). This demonstrates the DKC1 antibody detected DKC1 protein (arrow).



DKC1 Antibody (Center) (Cat. #TA324811) immunohistochemistry analysis in formalin fixed and paraffin embedded human prostate carcinoma followed by peroxidase conjugation of the secondary antibody and DAB staining. This data demonstrates the use of the DKC1 Antibody (Center) for immunohistochemistry. Clinical relevance has not been evaluated.



Confocal immunofluorescent analysis of DKC1 Antibody (Center) (Cat. #TA324811) with 293 cell followed by Alexa Fluor[®] 488-conjugated goat anti-rabbit IgG (green). DAPI was used to stain the cell nuclear (blue).