

Product datasheet for **TA324810**

Glucocorticoid Receptor (NR3C1) Rabbit Polyclonal Antibody

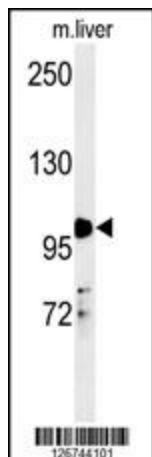
Product data:

Product Type:	Primary Antibodies
Applications:	IF, IHC, WB
Recommended Dilution:	WB: 1:1000, IHC: 1:10~50, IF: 1:10~50
Reactivity:	Human, Mouse (Predicted: Rabbit)
Host:	Rabbit
Isotype:	IgG
Clonality:	Polyclonal
Immunogen:	This NR3C1 antibody is generated from rabbits immunized with a KLH conjugated synthetic peptide between 236-262 amino acids from the Central region of human NR3C1.
Formulation:	Purified polyclonal antibody supplied in PBS with 0.09% (W/V) sodium azide.
Concentration:	lot specific
Purification:	This antibody is purified through a protein A column, followed by peptide affinity purification.
Conjugation:	Unconjugated
Storage:	Store at -20°C as received.
Stability:	Stable for 12 months from date of receipt.
Predicted Protein Size:	85659 Da
Gene Name:	nuclear receptor subfamily 3 group C member 1
Database Link:	NP_000167 Entrez Gene 14815 Mouse Entrez Gene 2908 Human P04150
Synonyms:	GCCR; GCR; GCRST; GR; GRL
Protein Families:	Druggable Genome, Nuclear Hormone Receptor, Transcription Factors
Protein Pathways:	Neuroactive ligand-receptor interaction



[View online »](#)

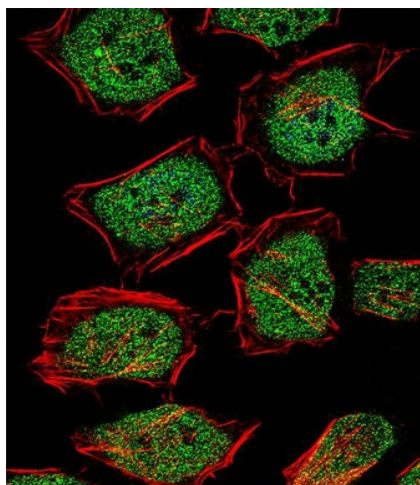
Product images:



NR3C1 Antibody (Center) (Cat.#TA324810) western blot analysis in mouse liver tissue lysates (35ug/lane). This demonstrates the NR3C1 antibody detected NR3C1 protein (arrow).



NR3C1 Antibody (Center) (Cat.#TA324810) immunohistochemistry analysis in formalin fixed and paraffin embedded human breast carcinoma followed by peroxidase conjugation of the secondary antibody and DAB staining. This data demonstrates the use of NR3C1 Antibody (Center) for immunohistochemistry. Clinical relevance has not been evaluated.



IF image of HeLa cell stained with NR3C1 Antibody (Center) (Cat#TA324810). HeLa cells were incubated with NR3C1 primary antibody (1:25, 1 h at 37°C). For secondary antibody, Alexa Fluor® 488 conjugated donkey anti-rabbit antibody (green) was used (1:400). Cytoplasmic actin was counterstained with Alexa Fluor® 555 (red) conjugated Phalloidin (7 units/ml). Nuclei were counterstained with DAPI (blue). NR3C1 immunoreactivity is localized to Cytoplasm and Nucleus significantly.