

Product datasheet for **TA324809S**

EGFR Rabbit Polyclonal Antibody

Product data:

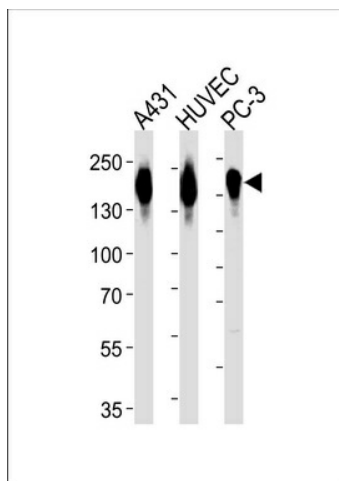
Product Type:	Primary Antibodies
Applications:	FC, IHC, WB
Recommended Dilution:	WB: 1:1000, IHC: 1:50~100, FC: 1:10~50
Reactivity:	Human
Host:	Rabbit
Isotype:	IgG
Clonality:	Polyclonal
Immunogen:	This EGFR-S1026 antibody is generated from rabbits immunized with a KLH conjugated synthetic peptide between 1004-1033 amino acids from the C-terminal region of human EGFR-S1026.
Formulation:	Purified polyclonal antibody supplied in PBS with 0.09% (W/V) sodium azide.
Concentration:	lot specific
Purification:	This antibody is purified through a protein A column, followed by peptide affinity purification.
Conjugation:	Unconjugated
Storage:	Store at -20°C as received.
Stability:	Stable for 12 months from date of receipt.
Predicted Protein Size:	134277 Da
Gene Name:	epidermal growth factor receptor
Database Link:	NP_005219 Entrez Gene 1956 Human P00533
Synonyms:	ERBB; ERBB1; HER1; mENA; NISBD2; PIG61
Protein Families:	Adult stem cells, Cancer stem cells, Druggable Genome, ES Cell Differentiation/IPS, Protein Kinase, Secreted Protein, Stem cell relevant signaling - JAK/STAT signaling pathway, Transmembrane



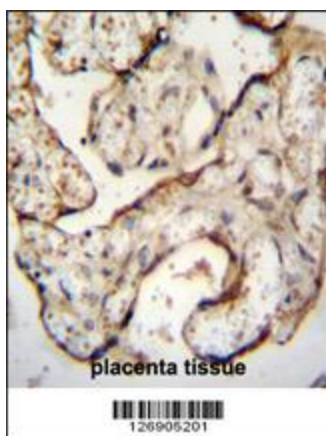
[View online »](#)

Protein Pathways:

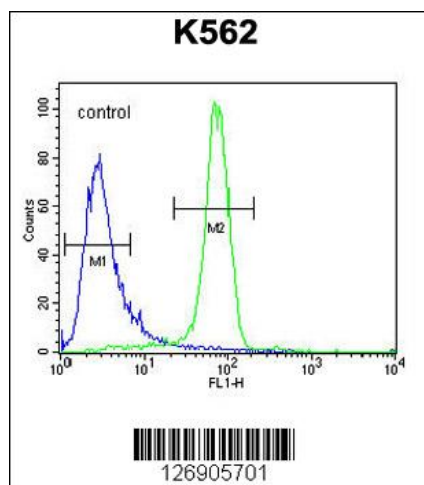
Adherens junction, Bladder cancer, Calcium signaling pathway, Colorectal cancer, Cytokine-cytokine receptor interaction, Dorso-ventral axis formation, Endocytosis, Endometrial cancer, Epithelial cell signaling in Helicobacter pylori infection, ErbB signaling pathway, Focal adhesion, Gap junction, Glioma, GnRH signaling pathway, MAPK signaling pathway, Melanoma, Non-small cell lung cancer, Pancreatic cancer, Pathways in cancer, Prostate cancer, Regulation of actin cytoskeleton

Product images:


Western blot analysis of lysates from A431, HUVEC, PC-3 cell line (from left to right), using EGFR Antibody (pS1026) (Cat. #TA324809). [TA324809] was diluted at 1:1000 at each lane. A goat anti-rabbit IgG H&L (HRP) at 1:5000 dilution was used as the secondary antibody. Lysates at 35ug per lane.



EGFR-S1026 Antibody (C-term) (Cat. #TA324809) immunohistochemistry analysis in formalin fixed and paraffin embedded human placenta tissue followed by peroxidase conjugation of the secondary antibody and DAB staining. This data demonstrates the use of the EGFR-S1026 Antibody (C-term) for immunohistochemistry. Clinical relevance has not been evaluated.



EGFR-S1026 Antibody (C-term) (Cat. #TA324809S) flow cytometric analysis of K562 cells (right histogram) compared to a negative control cell (left histogram). FITC-conjugated goat-anti-rabbit secondary antibodies were used for the analysis.