

## Product datasheet for **TA324808**

### FADS2 Rabbit Polyclonal Antibody

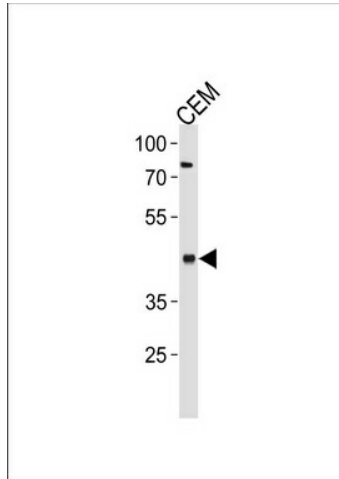
#### Product data:

Product Type:	Primary Antibodies
Applications:	FC, WB
Recommended Dilution:	WB: 1:1000, FC: 1:10~50
Reactivity:	Human (Predicted: Bovine, Xenopus)
Host:	Rabbit
Isotype:	IgG
Clonality:	Polyclonal
Immunogen:	This FADS2 antibody is generated from rabbits immunized with a KLH conjugated synthetic peptide between 96-122 amino acids from the Central region of human FADS2.
Formulation:	Purified polyclonal antibody supplied in PBS with 0.09% (W/V) sodium azide.
Concentration:	lot specific
Purification:	This antibody is purified through a protein A column, followed by peptide affinity purification.
Conjugation:	Unconjugated
Storage:	Store at -20°C as received.
Stability:	Stable for 12 months from date of receipt.
Predicted Protein Size:	52259 Da
Gene Name:	fatty acid desaturase 2
Database Link:	<a href="#">NP_004256</a> <a href="#">Entrez Gene 9415 Human</a> <a href="#">O95864</a>
Synonyms:	D6D; DES6; FADSD6; LLCDL2; SLL0262; TU13
Protein Families:	Transmembrane
Protein Pathways:	alpha-Linolenic acid metabolism, Biosynthesis of unsaturated fatty acids, PPAR signaling pathway

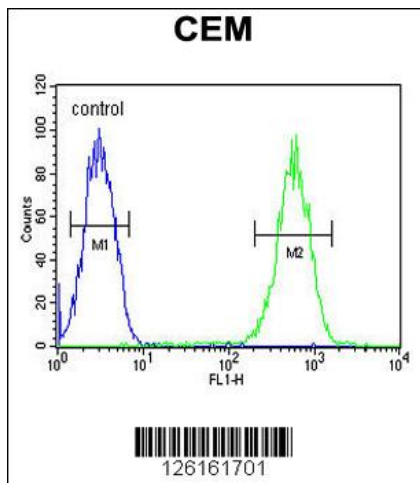


[View online »](#)

Product images:



FADS2 Antibody (Center) (Cat. #TA324808) western blot analysis in CEM cell line lysates (35ug/lane). This demonstrates the FADS2 antibody detected the FADS2 protein (arrow).



FADS2 Antibody (Center) (Cat. #TA324808) flow cytometric analysis of CEM cells (right histogram) compared to a negative control cell (left histogram). FITC-conjugated goat-anti-rabbit secondary antibodies were used for the analysis.