

Product datasheet for **TA324807S**

HMGA2 Rabbit Polyclonal Antibody

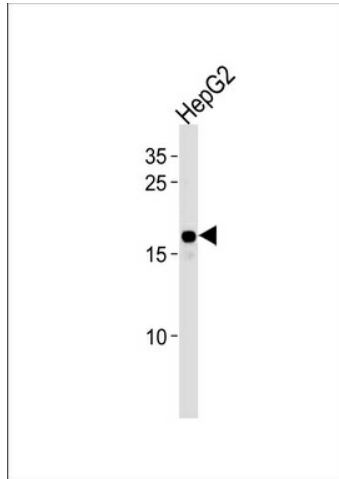
Product data:

Product Type:	Primary Antibodies
Applications:	FC, WB
Recommended Dilution:	WB: 1:1000, FC: 1:10~50
Reactivity:	Human (Predicted: Mouse)
Host:	Rabbit
Isotype:	IgG
Clonality:	Polyclonal
Immunogen:	This HMGA2 antibody is generated from rabbits immunized with a KLH conjugated synthetic peptide between 64-92 amino acids from the C-terminal region of human HMGA2.
Formulation:	Purified polyclonal antibody supplied in PBS with 0.09% (W/V) sodium azide.
Concentration:	lot specific
Purification:	This antibody is purified through a protein A column, followed by peptide affinity purification.
Conjugation:	Unconjugated
Storage:	Store at -20°C as received.
Stability:	Stable for 12 months from date of receipt.
Predicted Protein Size:	11832 Da
Gene Name:	high mobility group AT-hook 2
Database Link:	NP_003474 Entrez Gene 15364 Mouse Entrez Gene 8091 Human P52926
Synonyms:	BABL; HMGI-C; HMGIC; LIPO; STQTL9
Protein Families:	Druggable Genome

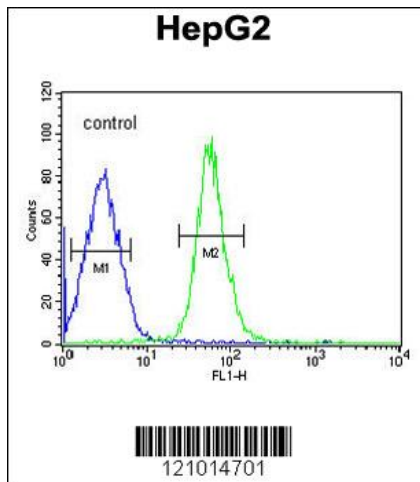


[View online »](#)

Product images:



HMGA2 Antibody (C-term) (Cat. #[TA324807]) western blot analysis in HepG2 cell line lysates (35ug/lane). This demonstrates the HMGA2 antibody detected the HMGA2 protein (arrow).



HMGA2 Antibody (C-term) (Cat. #[TA324807]) flow cytometric analysis of HepG2 cells (right histogram) compared to a negative control cell (left histogram). FITC-conjugated goat-anti-rabbit secondary antibodies were used for the analysis.