

Product datasheet for **TA324807**

HMGA2 Rabbit Polyclonal Antibody

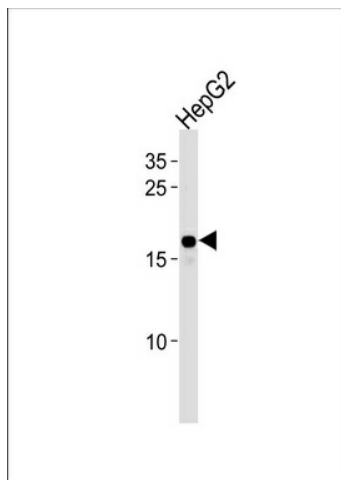
Product data:

| | |
|-------------------------|--|
| Product Type: | Primary Antibodies |
| Applications: | FC, WB |
| Recommended Dilution: | WB: 1:1000, FC: 1:10~50 |
| Reactivity: | Human (Predicted: Mouse) |
| Host: | Rabbit |
| Isotype: | IgG |
| Clonality: | Polyclonal |
| Immunogen: | This HMGA2 antibody is generated from rabbits immunized with a KLH conjugated synthetic peptide between 64-92 amino acids from the C-terminal region of human HMGA2. |
| Formulation: | Purified polyclonal antibody supplied in PBS with 0.09% (W/V) sodium azide. |
| Concentration: | lot specific |
| Purification: | This antibody is purified through a protein A column, followed by peptide affinity purification. |
| Conjugation: | Unconjugated |
| Storage: | Store at -20°C as received. |
| Stability: | Stable for 12 months from date of receipt. |
| Predicted Protein Size: | 11832 Da |
| Gene Name: | high mobility group AT-hook 2 |
| Database Link: | NP_003474 Entrez Gene 15364 Mouse Entrez Gene 8091 Human P52926 |
| Synonyms: | BABL; HMGI-C; HMGIC; LIPO; STQTL9 |
| Protein Families: | Druggable Genome |

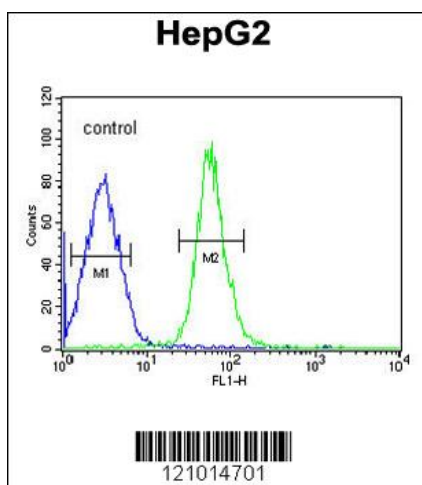


[View online »](#)

Product images:



HMGA2 Antibody (C-term) (Cat. #TA324807) western blot analysis in HepG2 cell line lysates (35ug/lane). This demonstrates the HMGA2 antibody detected the HMGA2 protein (arrow).



HMGA2 Antibody (C-term) (Cat. #TA324807) flow cytometric analysis of HepG2 cells (right histogram) compared to a negative control cell (left histogram). FITC-conjugated goat-anti-rabbit secondary antibodies were used for the analysis.