

Product datasheet for **TA324806**

Neuromedin B (NMB) Rabbit Polyclonal Antibody

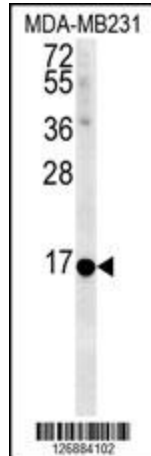
Product data:

Product Type:	Primary Antibodies
Applications:	IF, IHC, WB
Recommended Dilution:	WB: 1:1000, IHC: 1:50~100, IF: 1:10~50
Reactivity:	Human (Predicted: Mouse)
Host:	Rabbit
Isotype:	IgG
Clonality:	Polyclonal
Immunogen:	This NMB antibody is generated from rabbits immunized with a KLH conjugated synthetic peptide between 15-42 amino acids from the Central region of human NMB.
Formulation:	Purified polyclonal antibody supplied in PBS with 0.09% (W/V) sodium azide.
Concentration:	lot specific
Purification:	This antibody is purified through a protein A column, followed by peptide affinity purification.
Conjugation:	Unconjugated
Storage:	Store at -20°C as received.
Stability:	Stable for 12 months from date of receipt.
Predicted Protein Size:	13252 Da
Gene Name:	neuromedin B
Database Link:	NP_066563 Entrez Gene 68039 Mouse Entrez Gene 4828 Human P08949
Synonyms:	MGC2277; MGC3936; MGC17211
Protein Families:	Secreted Protein, Transmembrane

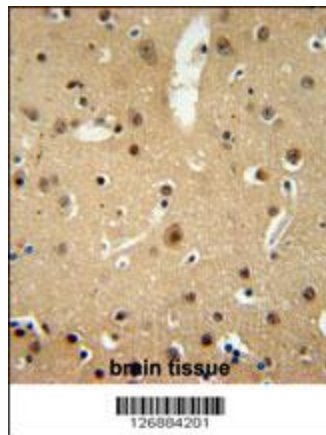


[View online »](#)

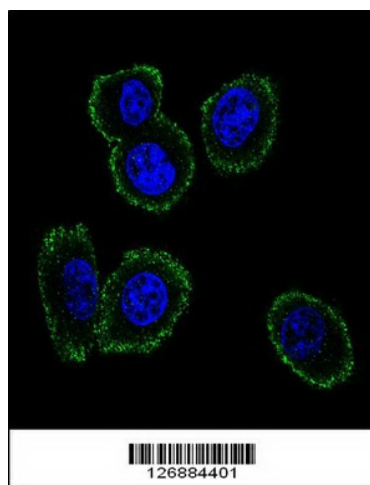
Product images:



NMB Antibody (Center) (Cat. #TA324806) western blot analysis in MDA-MB231 cell line lysates (35ug/lane). This demonstrates the NMB antibody detected the NMB protein (arrow).



NMB Antibody (Center) (Cat. #TA324806) immunohistochemistry analysis in formalin fixed and paraffin embedded human brain tissue followed by peroxidase conjugation of the secondary antibody and DAB staining. This data demonstrates the use of the NMB Antibody (Center) for immunohistochemistry. Clinical relevance has not been evaluated.



Confocal immunofluorescent analysis of NMB Antibody (Center) (Cat#TA324806) with MDA-MB231 cell followed by Alexa Fluor 488-conjugated goat anti-rabbit IgG (green). DAPI was used to stain the cell nuclear (blue).