

Product datasheet for **TA324805S**

SMAD6 Rabbit Polyclonal Antibody

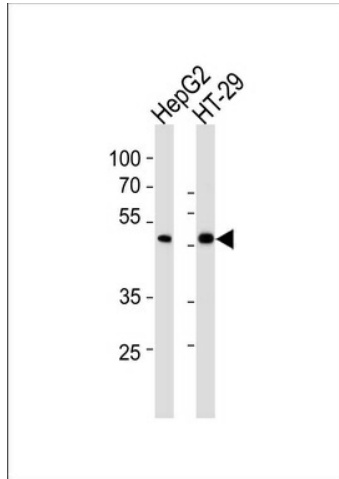
Product data:

Product Type:	Primary Antibodies
Applications:	FC, WB
Recommended Dilution:	WB: 1:1000, FC: 1:10~50
Reactivity:	Human (Predicted: Mouse)
Host:	Rabbit
Isotype:	IgG
Clonality:	Polyclonal
Immunogen:	This SMAD6 antibody is generated from rabbits immunized with a KLH conjugated synthetic peptide between 358-386 amino acids from the Central region of human SMAD6.
Formulation:	Purified polyclonal antibody supplied in PBS with 0.09% (W/V) sodium azide.
Concentration:	lot specific
Purification:	This antibody is purified through a protein A column, followed by peptide affinity purification.
Conjugation:	Unconjugated
Storage:	Store at -20°C as received.
Stability:	Stable for 12 months from date of receipt.
Predicted Protein Size:	53497 Da
Gene Name:	SMAD family member 6
Database Link:	NP_001136333 Entrez Gene 17130 Mouse Entrez Gene 4091 Human O43541
Synonyms:	AOVD2; HsT17432; MADH6; MADH7
Protein Families:	Cancer stem cells, Druggable Genome, ES Cell Differentiation/IPS, Transcription Factors
Protein Pathways:	TGF-beta signaling pathway

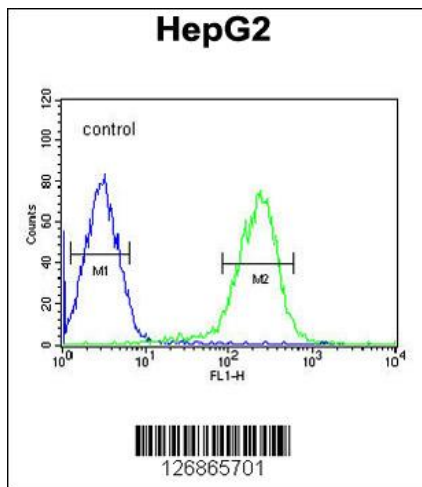


[View online »](#)

Product images:



SMAD6 Antibody (Center) (Cat. #[TA324805]) western blot analysis in HepG2, HT29 cell line lysates (35ug/lane). This demonstrates the SMAD6 antibody detected the SMAD6 protein (arrow).



SMAD6 Antibody (Center) (Cat. #[TA324805]) flow cytometric analysis of HepG2 cells (right histogram) compared to a negative control cell (left histogram). FITC-conjugated goat-anti-rabbit secondary antibodies were used for the analysis.