

Product datasheet for **TA324804**

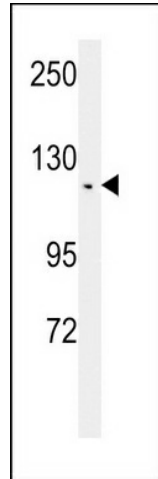
Teashirt homolog 2 (TSHZ2) Rabbit Polyclonal Antibody

Product data:

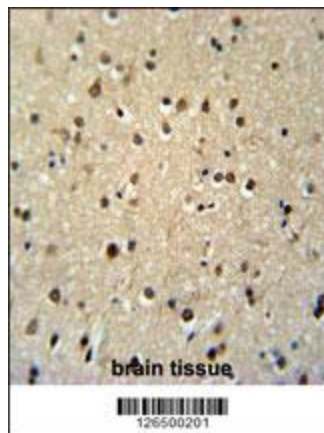
Product Type:	Primary Antibodies
Applications:	FC, IF, IHC, WB
Recommended Dilution:	WB: 1:1000, IHC: 1:50~100, FC: 1:10~50, IF: 1:10~50
Reactivity:	Human (Predicted: Mouse, Pig)
Host:	Rabbit
Isotype:	IgG
Clonality:	Polyclonal
Immunogen:	This TSH2 antibody is generated from rabbits immunized with a KLH conjugated synthetic peptide between 232-261 amino acids from the N-terminal region of human TSH2.
Formulation:	Purified polyclonal antibody supplied in PBS with 0.09% (W/V) sodium azide.
Concentration:	lot specific
Purification:	This antibody is purified through a protein A column, followed by peptide affinity purification.
Conjugation:	Unconjugated
Storage:	Store at -20°C as received.
Stability:	Stable for 12 months from date of receipt.
Predicted Protein Size:	115005 Da
Gene Name:	teashirt zinc finger homeobox 2
Database Link:	NP_775756 Entrez Gene 228911 Mouse Entrez Gene 128553 Human Q9NRE2
Synonyms:	C20orf17; OVC10-2; TSH2; ZABC2; ZNF218



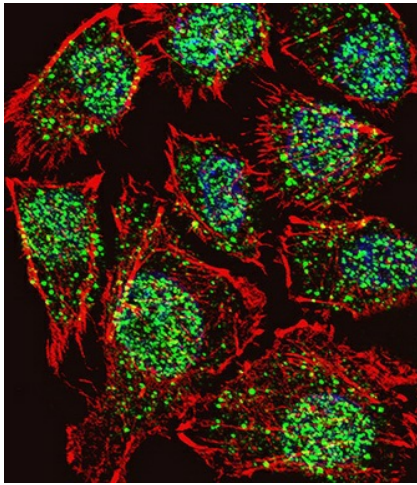
[View online »](#)

Product images:

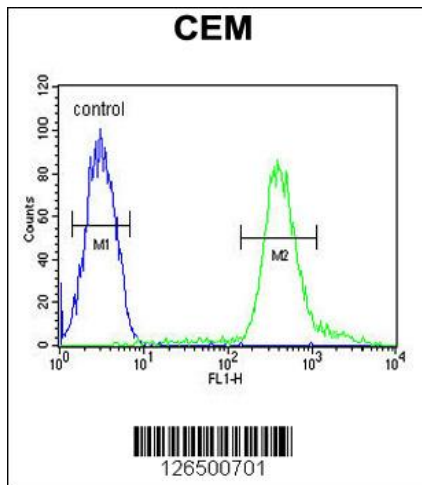
Western blot analysis of TSH2 Antibody (N-term) (Cat. #TA324804) in CEM cell line lysates (35ug/lane). TSH2 (arrow) was detected using the purified Pab.



TSH2 Antibody (N-term) (Cat. #TA324804) immunohistochemistry analysis in formalin fixed and paraffin embedded human brain tissue followed by peroxidase conjugation of the secondary antibody and DAB staining. This data demonstrates the use of the TSH2 Antibody (N-term) for immunohistochemistry. Clinical relevance has not been evaluated.



IF image of U251 cell stained with TSH2 Antibody (N-term) (Cat#TA324804).U251 cells were incubated with TSH2 primary antibody (1:25, 1 h at 37°C). For secondary antibody, Alexa Fluor® 488 conjugated donkey anti-rabbit antibody (green) was used (1:400).Cytoplasmic actin was counterstained with Alexa Fluor® 555 (red) conjugated Phalloidin (7 units/ml). Nuclei were counterstained with DAPI (blue). TSH2 immunoreactivity is localized to Nucleus and Vesicles significantly.



TSH2 Antibody (N-term) (Cat. #TA324804) flow cytometric analysis of CEM cells (right histogram) compared to a negative control cell (left histogram).FITC-conjugated goat-anti-rabbit secondary antibodies were used for the analysis.