

## Product datasheet for **TA324803S**

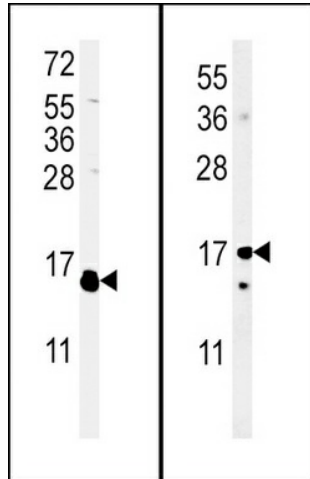
### IL4 Rabbit Polyclonal Antibody

#### Product data:

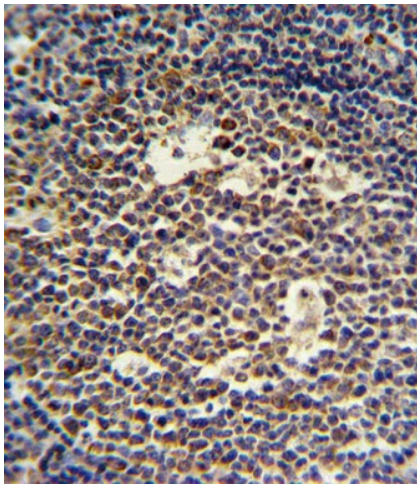
Product Type:	Primary Antibodies
Applications:	FC, IHC, WB
Recommended Dilution:	WB: 1:1000, IHC: 1:10~50, FC: 1:10~50
Reactivity:	Human, Mouse (Predicted: Monkey)
Host:	Rabbit
Isotype:	IgG
Clonality:	Polyclonal
Immunogen:	This L4 antibody is generated from rabbits immunized with a KLH conjugated synthetic peptide between 122-150 amino acids from the C-terminal region of human L4.
Formulation:	Purified polyclonal antibody supplied in PBS with 0.09% (W/V) sodium azide.
Concentration:	lot specific
Purification:	This antibody is purified through a protein A column, followed by peptide affinity purification.
Conjugation:	Unconjugated
Storage:	Store at -20°C as received.
Stability:	Stable for 12 months from date of receipt.
Predicted Protein Size:	17492 Da
Gene Name:	interleukin 4
Database Link:	<a href="#">NP_000580</a> <a href="#">Entrez Gene 16189 Mouse</a> <a href="#">Entrez Gene 574281 Monkey</a> <a href="#">Entrez Gene 3565 Human</a> <a href="#">P05112</a>
Synonyms:	BCGF-1; BCGF1; BSF-1; BSF1; IL-4
Protein Families:	Druggable Genome, Secreted Protein
Protein Pathways:	Allograft rejection, Asthma, Autoimmune thyroid disease, Cytokine-cytokine receptor interaction, Fc epsilon RI signaling pathway, Hematopoietic cell lineage, Jak-STAT signaling pathway, T cell receptor signaling pathway



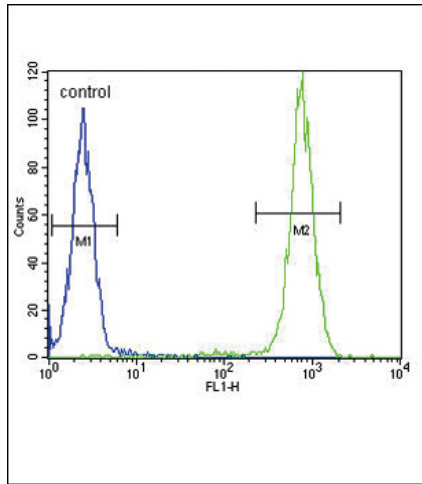
[View online »](#)

**Product images:**

(LEFT)Western blot analysis of IL4 Antibody (C-term) (Cat. #[TA324803]) in WiDr cell line lysates (35ug/lane).IL4 (arrow) was detected using the purified Pab. (RIGHT)Western blot analysis of IL4 Antibody (C-term) (Cat. #[TA324803]) in mouse cerebellum cell line lysates (35ug/lane).IL4 (arrow) was detected using the purified Pab.



IL4 Antibody (C-term) (Cat. #[TA324803]) IHC analysis in formalin fixed and paraffin embedded tonsil followed by peroxidase conjugation of the secondary antibody and DAB staining. This data demonstrates the use of the IL4 Antibody (C-term) for immunohistochemistry. Clinical relevance has not been evaluated.



IL4 Antibody (C-term) (Cat. #[TA324803]) flow cytometric analysis of WiDr cells (right histogram) compared to a negative control cell (left histogram). FITC-conjugated goat-anti-rabbit secondary antibodies were used for the analysis.