

Product datasheet for **TA324802S**

HOXC6 Rabbit Polyclonal Antibody

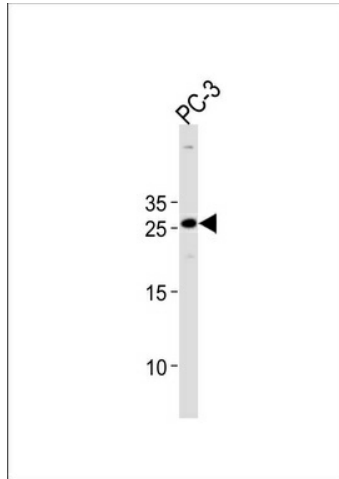
Product data:

Product Type:	Primary Antibodies
Applications:	FC, WB
Recommended Dilution:	WB: 1:1000, FC: 1:10~50
Reactivity:	Human (Predicted: Mouse)
Host:	Rabbit
Isotype:	IgG
Clonality:	Polyclonal
Immunogen:	This HOXC6 antibody is generated from rabbits immunized with a KLH conjugated synthetic peptide between 200-227 amino acids from the C-terminal region of human HOXC6.
Formulation:	Purified polyclonal antibody supplied in PBS with 0.09% (W/V) sodium azide.
Concentration:	lot specific
Purification:	This antibody is purified through a protein A column, followed by peptide affinity purification.
Conjugation:	Unconjugated
Storage:	Store at -20°C as received.
Stability:	Stable for 12 months from date of receipt.
Predicted Protein Size:	26915 Da
Gene Name:	homeobox C6
Database Link:	NP_004494 Entrez Gene 15425 Mouse Entrez Gene 3223 Human P09630
Synonyms:	CP25; HHO.C8; HOX3; HOX3C
Protein Families:	Transcription Factors

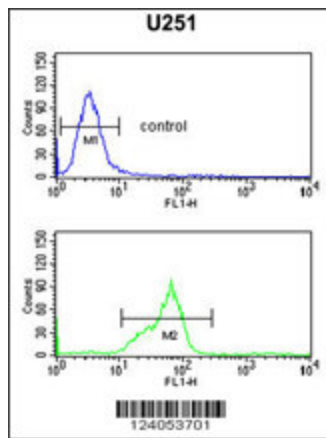


[View online »](#)

Product images:



HOXC6 Antibody (C-term) (Cat. #[TA324802]) western blot analysis in PC-3 cell line lysates (35ug/lane). This demonstrates the HOXC6 antibody detected the HOXC6 protein (arrow).



HOXC6 Antibody (C-term) (Cat. #[TA324802]) flow cytometric analysis of U251 cells (bottom histogram) compared to a negative control cell (top histogram). FITC-conjugated goat-anti-rabbit secondary antibodies were used for the analysis.