

## Product datasheet for **TA324800**

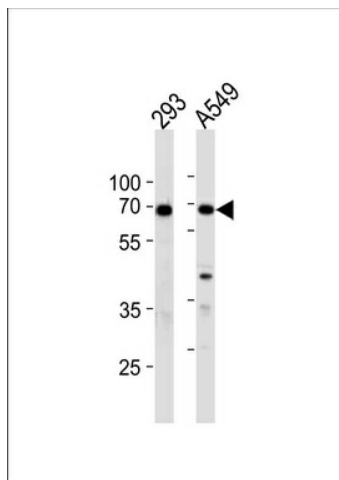
### **Ku70 (XRCC6) Rabbit Polyclonal Antibody**

#### **Product data:**

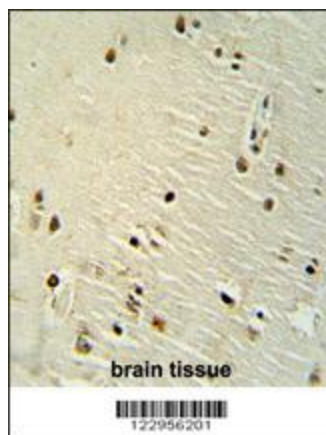
<b>Product Type:</b>	Primary Antibodies
<b>Applications:</b>	FC, IF, IHC, WB
<b>Recommended Dilution:</b>	WB: 1:1000, IHC: 1:50~100, FC: 1:10~50, IF: 1:10~50
<b>Reactivity:</b>	Human
<b>Host:</b>	Rabbit
<b>Isotype:</b>	IgG
<b>Clonality:</b>	Polyclonal
<b>Immunogen:</b>	This XRCC6 antibody is generated from rabbits immunized with a KLH conjugated synthetic peptide between 228-254 amino acids from the Central region of human XRCC6.
<b>Formulation:</b>	Purified polyclonal antibody supplied in PBS with 0.09% (W/V) sodium azide.
<b>Concentration:</b>	lot specific
<b>Purification:</b>	This antibody is purified through a protein A column, followed by peptide affinity purification.
<b>Conjugation:</b>	Unconjugated
<b>Storage:</b>	Store at -20°C as received.
<b>Stability:</b>	Stable for 12 months from date of receipt.
<b>Predicted Protein Size:</b>	69843 Da
<b>Gene Name:</b>	X-ray repair complementing defective repair in Chinese hamster cells 6
<b>Database Link:</b>	<a href="#">NP_001460</a> <a href="#">Entrez Gene 2547 Human</a> <a href="#">P12956</a>
<b>Synonyms:</b>	CTC75; CTCBF; G22P1; KU70; ML8; TLAA
<b>Protein Families:</b>	Druggable Genome, Transcription Factors
<b>Protein Pathways:</b>	Non-homologous end-joining



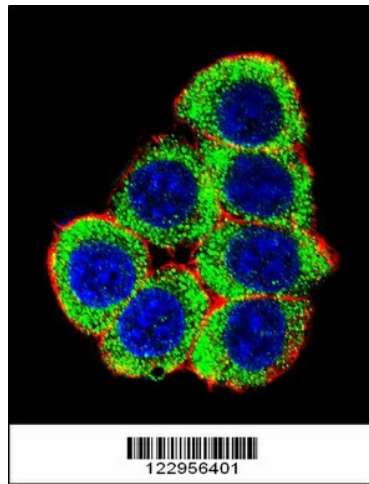
[View online »](#)

**Product images:**

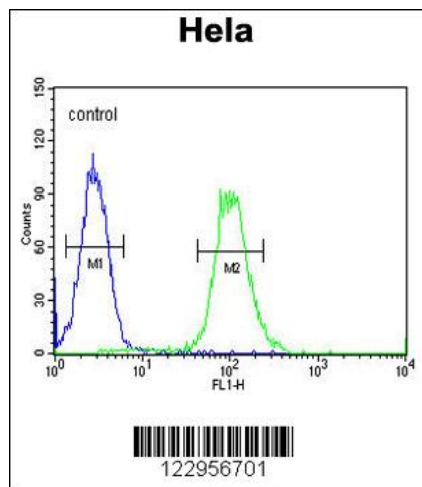
XRCC6 Antibody (Center) (Cat. #TA324800) western blot analysis in 293, A549 cell line lysates (35ug/lane). This demonstrates the XRCC6 antibody detected the XRCC6 protein (arrow).



XRCC6 antibody (Center) (Cat. #TA324800) immunohistochemistry analysis in formalin fixed and paraffin embedded human brain tissue followed by peroxidase conjugation of the secondary antibody and DAB staining. This data demonstrates the use of the XRCC6 antibody (Center) for immunohistochemistry. Clinical relevance has not been evaluated.



Confocal immunofluorescent analysis of XRCC6 Antibody (Center) (Cat#TA324800) with 293 cell followed by Alexa Fluor 488-conjugated goat anti-rabbit IgG (green). Actin filaments have been labeled with Alexa Fluor 555 phalloidin (red). DAPI was used to stain the cell nuclear (blue).



XRCC6 Antibody (Center) (Cat. #TA324800) flow cytometric analysis of Hela cells (right histogram) compared to a negative control cell (left histogram). FITC-conjugated goat-anti-rabbit secondary antibodies were used for the analysis.