

Product datasheet for **TA324799**

Ku70 (XRCC6) Rabbit Polyclonal Antibody

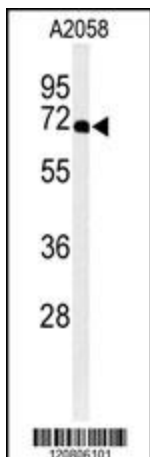
Product data:

Product Type:	Primary Antibodies
Applications:	FC, IF, IHC, WB
Recommended Dilution:	WB: 1:1000, IHC: 1:50~100, FC: 1:10~50, IF: 1:10~50
Reactivity:	Human
Host:	Rabbit
Isotype:	IgG
Clonality:	Polyclonal
Immunogen:	This XRCC6 antibody is generated from rabbits immunized with a KLH conjugated synthetic peptide between 521-548 amino acids from the C-terminal region of human XRCC6.
Formulation:	Purified polyclonal antibody supplied in PBS with 0.09% (W/V) sodium azide.
Concentration:	lot specific
Purification:	This antibody is purified through a protein A column, followed by peptide affinity purification.
Conjugation:	Unconjugated
Storage:	Store at -20°C as received.
Stability:	Stable for 12 months from date of receipt.
Predicted Protein Size:	69843 Da
Gene Name:	X-ray repair complementing defective repair in Chinese hamster cells 6
Database Link:	NP_001460 Entrez Gene 2547 Human P12956
Synonyms:	CTC75; CTCBF; G22P1; KU70; ML8; TLAA
Protein Families:	Druggable Genome, Transcription Factors
Protein Pathways:	Non-homologous end-joining

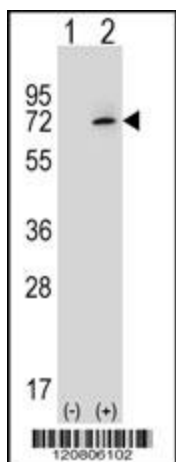


[View online »](#)

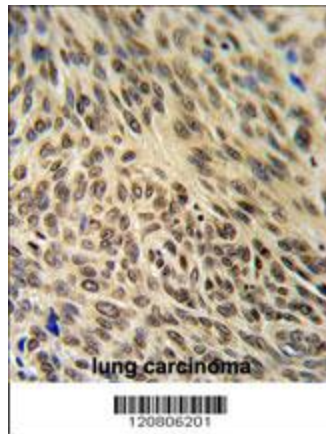
Product images:



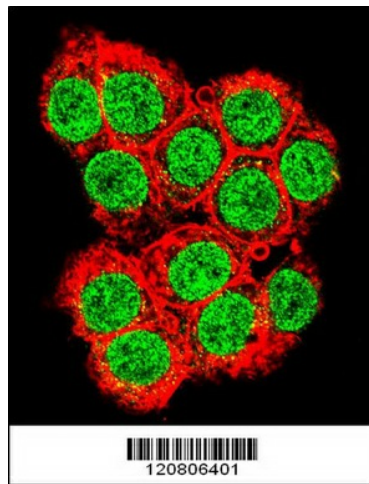
Western blot analysis of XRCC6 Antibody (C-term) (Cat. #TA324799) in A2058 cell line lysates (35ug/lane).XRCC6 (arrow) was detected using the purified Pab.



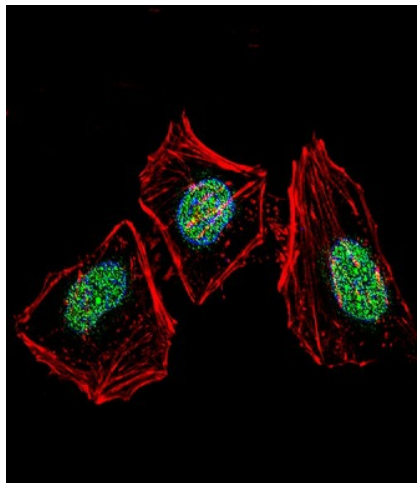
Western blot analysis of XRCC6 (arrow) using rabbit polyclonal XRCC6 Antibody (C-term) (Cat. #TA324799). 293 cell lysates (2 ug/lane) either nontransfected (Lane 1) or transiently transfected (Lane 2) with the XRCC6 gene.



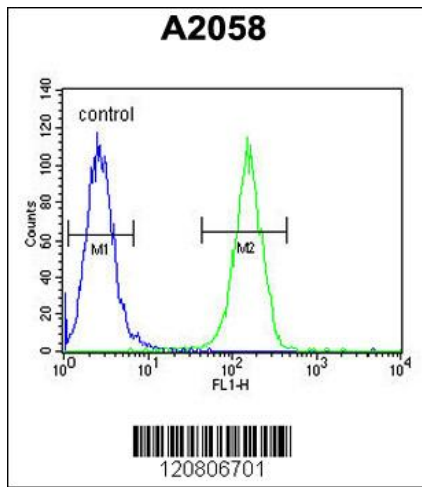
XRCC6 Antibody (C-term) (Cat. #TA324799) IHC analysis in formalin fixed and paraffin embedded human lung carcinoma followed by peroxidase conjugation of the secondary antibody and DAB staining. This data demonstrates the use of the XRCC6 Antibody (C-term) for immunohistochemistry. Clinical relevance has not been evaluated.



Confocal immunofluorescent analysis of XRCC6 Antibody (C-term) (Cat#TA324799) with 293 cell followed by Alexa Fluor 488-conjugated goat anti-rabbit IgG (green). Actin filaments have been labeled with Alexa Fluor 555 phalloidin (red).



IF image of HeLa cell stained with XRCC6 Antibody (C-term) (Cat#TA324799). HeLa cells were incubated with XRCC6 primary antibody (1:25, 1 h at 37°C). For secondary antibody, Alexa Fluor® 488 conjugated donkey anti-rabbit antibody (green) was used (1:400). Cytoplasmic actin was counterstained with Alexa Fluor® 555 (red) conjugated Phalloidin (7 units/ml). Nuclei were counterstained with DAPI (blue). XRCC6 immunoreactivity is localized to nucleus significantly and Cytoplasm weakly.



XRCC6 Antibody (C-term) (Cat. #TA324799) flow cytometric analysis of A2058 cells (right histogram) compared to a negative control cell (left histogram). FITC-conjugated goat-anti-rabbit secondary antibodies were used for the analysis.