

Product datasheet for **TA324798S**

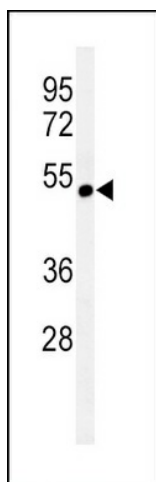
CHRNA3 Rabbit Polyclonal Antibody

Product data:

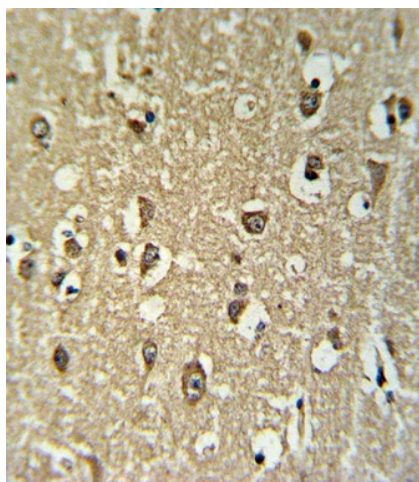
Product Type:	Primary Antibodies
Applications:	IHC, WB
Recommended Dilution:	WB: 1:1000, IHC: 1:10~50
Reactivity:	Human (Predicted: Bovine)
Host:	Rabbit
Isotype:	IgG
Clonality:	Polyclonal
Immunogen:	This CHRNA3 antibody is generated from rabbits immunized with a KLH conjugated synthetic peptide between 25-52 amino acids from the N-terminal region of human CHRNA3.
Formulation:	Purified polyclonal antibody supplied in PBS with 0.09% (W/V) sodium azide.
Concentration:	lot specific
Purification:	This antibody is purified through a protein A column, followed by peptide affinity purification.
Conjugation:	Unconjugated
Storage:	Store at -20°C as received.
Stability:	Stable for 12 months from date of receipt.
Predicted Protein Size:	57480 Da
Gene Name:	cholinergic receptor nicotinic alpha 3 subunit
Database Link:	NP_000734 Entrez Gene 1136 Human P32297
Synonyms:	LNCR2; NACHRA3; PAOD2
Protein Families:	Druggable Genome, Ion Channels: Cys-loop Receptors, Transmembrane



[View online »](#)

Product images:

Western blot analysis of CHRNA3 Antibody (N-term) (Cat. #[TA324798]) in CEM cell line lysates (35ug/lane).CHRNA3 (arrow) was detected using the purified Pab.



CHRNA3 Antibody (N-term) (Cat. #[TA324798]) IHC analysis in formalin fixed and paraffin embedded brain tissue followed by peroxidase conjugation of the secondary antibody and DAB staining. This data demonstrates the use of the CHRNA3 Antibody (N-term) for immunohistochemistry. Clinical relevance has not been evaluated.