

## Product datasheet for **TA324797**

### Caspase 3 (CASP3) Rabbit Polyclonal Antibody

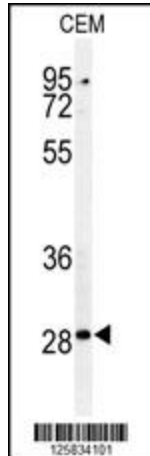
#### Product data:

Product Type:	Primary Antibodies
Applications:	FC, IHC, WB
Recommended Dilution:	WB: 1:1000, IHC: 1:50~100, FC: 1:10~50
Reactivity:	Human
Host:	Rabbit
Isotype:	IgG
Clonality:	Polyclonal
Immunogen:	This CASP3(Asp175) antibody is generated from rabbits immunized with a KLH conjugated synthetic peptide between 149-179 amino acids from human CASP3(Asp175).
Formulation:	Purified polyclonal antibody supplied in PBS with 0.09% (W/V) sodium azide.
Concentration:	lot specific
Purification:	This antibody is purified through a protein A column, followed by peptide affinity purification.
Conjugation:	Unconjugated
Storage:	Store at -20°C as received.
Stability:	Stable for 12 months from date of receipt.
Predicted Protein Size:	31608 Da
Gene Name:	caspase 3
Database Link:	<a href="#">NP_004337</a> <a href="#">Entrez Gene 836 Human</a> <a href="#">P42574</a>
Synonyms:	CPP32; CPP32B; SCA-1
Protein Families:	Druggable Genome, ES Cell Differentiation/IPS, Protease
Protein Pathways:	Alzheimer's disease, Amyotrophic lateral sclerosis (ALS), Apoptosis, Colorectal cancer, Epithelial cell signaling in Helicobacter pylori infection, Huntington's disease, MAPK signaling pathway, Natural killer cell mediated cytotoxicity, p53 signaling pathway, Parkinson's disease, Pathways in cancer, Viral myocarditis

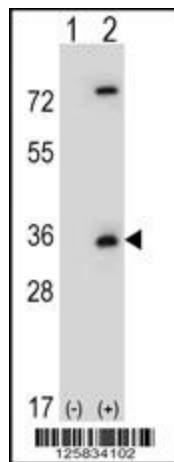


[View online »](#)

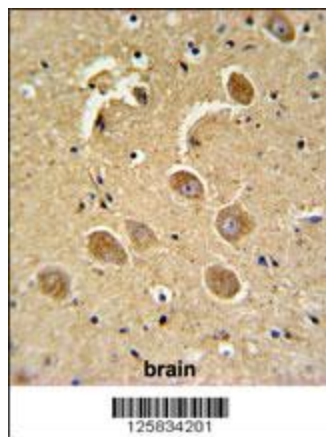
Product images:



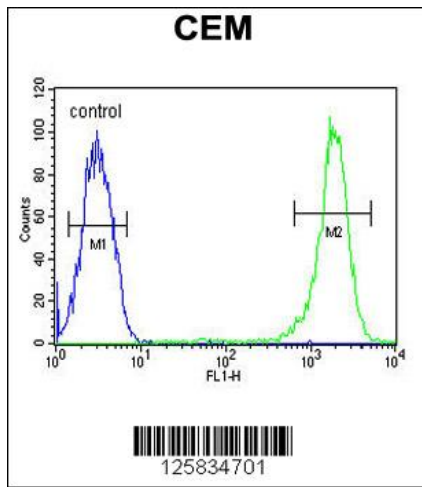
Western blot analysis of CASP3 (Asp175) Antibody (Cat. #TA324797) in CEM cell line lysates (35ug/lane). CASP3 (arrow) was detected using the purified Pab.



Western blot analysis of CASP3 (arrow) using rabbit polyclonal CASP3 Antibody (Cat. #TA324797). 293 cell lysates (2 ug/lane) either nontransfected (Lane 1) or transiently transfected (Lane 2) with the CASP3 gene.



CASP3 (Asp175) Antibody (Cat. #TA324797) IHC analysis in formalin fixed and paraffin embedded human brain tissue followed by peroxidase conjugation of the secondary antibody and DAB staining. This data demonstrates the use of the CASP3 (Asp175) Antibody for immunohistochemistry. Clinical relevance has not been evaluated.



CASP3 (Asp175) Antibody (Cat. #TA324797) flow cytometric analysis of CEM cells (right histogram) compared to a negative control cell (left histogram). FITC-conjugated goat-anti-rabbit secondary antibodies were used for the analysis.