

## Product datasheet for **TA324796**

### Inosine triphosphate pyrophosphatase (ITPA) Rabbit Polyclonal Antibody

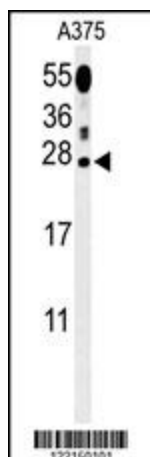
#### Product data:

Product Type:	Primary Antibodies
Applications:	FC, IF, IHC, WB
Recommended Dilution:	IF: 1:25, WB: 1:1000, IHC: 1:50~100, FC: 1:10~50
Reactivity:	Human (Predicted: Mouse, Rat, Bovine, Chicken, Xenopus)
Host:	Rabbit
Isotype:	IgG
Clonality:	Polyclonal
Immunogen:	This ITPA antibody is generated from rabbits immunized with a KLH conjugated synthetic peptide between 24-51 amino acids from the N-terminal region of human ITPA.
Formulation:	Purified polyclonal antibody supplied in PBS with 0.09% (W/V) sodium azide.
Concentration:	lot specific
Purification:	This antibody is purified through a protein A column, followed by peptide affinity purification.
Conjugation:	Unconjugated
Storage:	Store at -20°C as received.
Stability:	Stable for 12 months from date of receipt.
Predicted Protein Size:	21446 Da
Gene Name:	inosine triphosphatase
Database Link:	<a href="#">NP_852470</a> <a href="#">Entrez Gene 16434 Mouse</a> <a href="#">Entrez Gene 311422 Rat</a> <a href="#">Entrez Gene 3704 Human</a> <a href="#">Q9BY32</a>
Synonyms:	C20orf37; dj794i6.3; HLC14-06-P; My049
Protein Families:	Druggable Genome
Protein Pathways:	Drug metabolism - other enzymes, Metabolic pathways, Purine metabolism, Pyrimidine metabolism

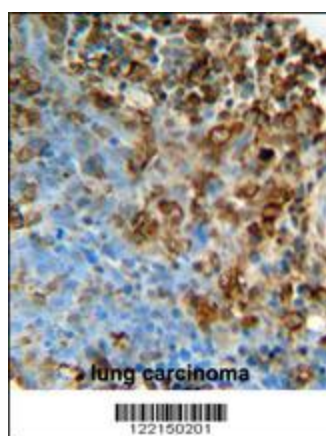


[View online »](#)

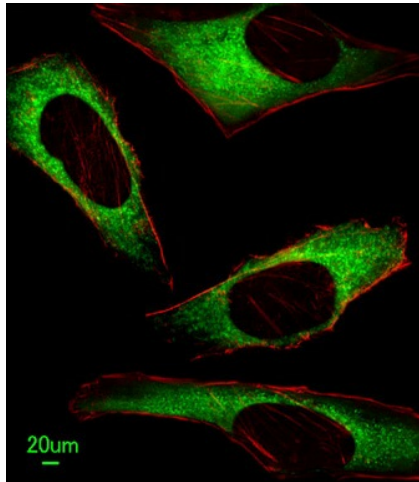
## Product images:



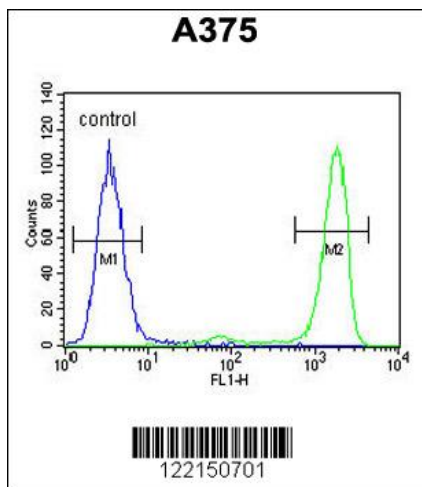
Western blot analysis of ITPA Antibody (N-term) (Cat. #TA324796) in A375 cell line lysates (35ug/lane). ITPA (arrow) was detected using the purified Pab.



ITPA Antibody (N-term) (Cat. #TA324796) immunohistochemistry analysis in formalin fixed and paraffin embedded human lung carcinoma followed by peroxidase conjugation of the secondary antibody and DAB staining. This data demonstrates the use of the ITPA Antibody (N-term) for immunohistochemistry. Clinical relevance has not been evaluated.



Immunofluorescent analysis of HeLa cells, using ITPA Antibody (N-term) (Cat. #TA324796). TA324796 was diluted at 1:25 dilution. Alexa Fluor 488-conjugated goat anti-rabbit IgG at 1:400 dilution was used as the secondary antibody (green). Cytoplasmic actin was counterstained with Dylight Fluor® 554 (red) conjugated Phalloidin (red).



ITPA Antibody (N-term) (Cat. #TA324796) flow cytometric analysis of A375 cells (right histogram) compared to a negative control cell (left histogram). FITC-conjugated goat-anti-rabbit secondary antibodies were used for the analysis.