

## Product datasheet for **TA324795S**

### GRP94 (HSP90B1) Rabbit Polyclonal Antibody

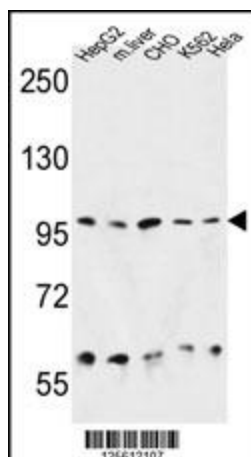
#### Product data:

Product Type:	Primary Antibodies
Applications:	FC, IF, IHC, WB
Recommended Dilution:	WB: 1:1000, IHC: 1:50~100, FC: 1:10~50, IF: 1:10~50
Reactivity:	Human, Mouse, Hamster (Predicted: Rat, Bovine, Chicken, Pig, Monkey)
Host:	Rabbit
Isotype:	IgG
Clonality:	Polyclonal
Immunogen:	This HSP90B1 antibody is generated from rabbits immunized with a KLH conjugated synthetic peptide between 16-43 amino acids from the N-terminal region of human HSP90B1.
Formulation:	Purified polyclonal antibody supplied in PBS with 0.09% (W/V) sodium azide.
Concentration:	lot specific
Purification:	This antibody is purified through a protein A column, followed by peptide affinity purification.
Conjugation:	Unconjugated
Storage:	Store at -20°C as received.
Stability:	Stable for 12 months from date of receipt.
Predicted Protein Size:	92469 Da
Gene Name:	heat shock protein 90kDa beta family member 1
Database Link:	<a href="#">NP_003290</a> <a href="#">Entrez Gene 22027 MouseEntrez Gene 362862 RatEntrez Gene 699568 MonkeyEntrez Gene 7184 Human</a> <a href="#">P14625</a>
Synonyms:	ECGP; GP96; GRP94; HEL-S-125m; HEL35; TRA1
Protein Families:	Druggable Genome
Protein Pathways:	NOD-like receptor signaling pathway, Pathways in cancer, Prostate cancer

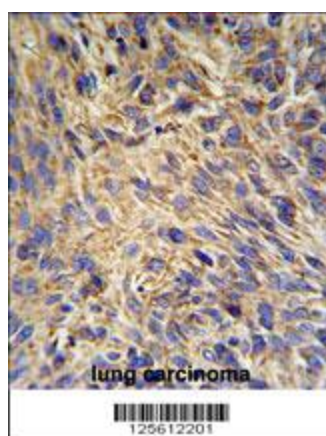


[View online »](#)

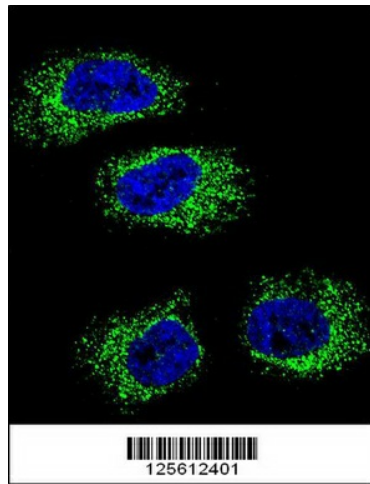
## Product images:



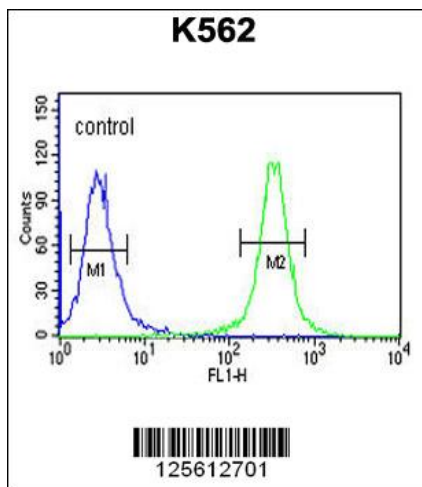
HSP90B1 Antibody (N-term) (Cat. #[TA324795]) western blot analysis in HepG2, CHO, K562, HeLa cell line and mouse liver tissue lysates (35ug/lane). This demonstrates the HSP90B1 antibody detected the HSP90B1 protein (arrow).



HSP90B1 Antibody (N-term) (Cat. #[TA324795]) IHC analysis in formalin fixed and paraffin embedded human lung carcinoma followed by peroxidase conjugation of the secondary antibody and DAB staining. This data demonstrates the use of the HSP90B1 Antibody (N-term) for immunohistochemistry. Clinical relevance has not been evaluated.



Confocal immunofluorescent analysis of HSP90B1 Antibody (N-term) (Cat#[TA324795]) with NCI-H460 cell followed by Alexa Fluor 488-conjugated goat anti-rabbit IgG (green). DAPI was used to stain the cell nuclear (blue).



HSP90B1 Antibody (N-term) (Cat. #[TA324795]) flow cytometric analysis of K562 cells (right histogram) compared to a negative control cell (left histogram). FITC-conjugated goat-anti-rabbit secondary antibodies were used for the analysis.