

Product datasheet for **TA324793**

Glucocorticoid Receptor (NR3C1) Rabbit Polyclonal Antibody

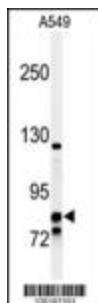
Product data:

Product Type:	Primary Antibodies
Applications:	IF, IHC, WB
Recommended Dilution:	WB: 1:1000, IHC: 1:50~100, IF: 1:10~50
Reactivity:	Human
Host:	Rabbit
Isotype:	IgG
Clonality:	Polyclonal
Immunogen:	This NR3C1 antibody is generated from rabbits immunized with a KLH conjugated synthetic peptide between 713-742 amino acids from the C-terminal region of human NR3C1.
Formulation:	Purified polyclonal antibody supplied in PBS with 0.09% (W/V) sodium azide.
Concentration:	lot specific
Purification:	This antibody is purified through a protein A column, followed by peptide affinity purification.
Conjugation:	Unconjugated
Storage:	Store at -20°C as received.
Stability:	Stable for 12 months from date of receipt.
Predicted Protein Size:	85659 Da
Gene Name:	nuclear receptor subfamily 3 group C member 1
Database Link:	NP_000167 Entrez Gene 2908 Human P04150
Synonyms:	GCCR; GCR; GCRST; GR; GRL
Protein Families:	Druggable Genome, Nuclear Hormone Receptor, Transcription Factors
Protein Pathways:	Neuroactive ligand-receptor interaction

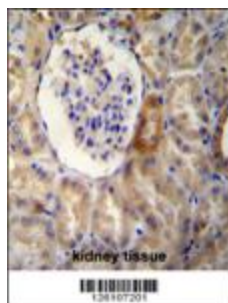


[View online »](#)

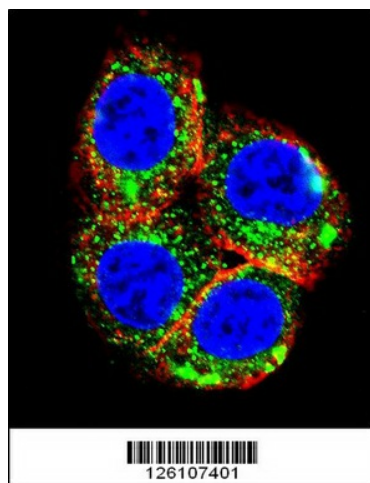
Product images:



Western blot analysis of NR3C1 Antibody (C-term) (Cat. #TA324793) in A549 cell line lysates (35ug/lane). NR3C1 (arrow) was detected using the purified Pab.



NR3C1 Antibody (C-term) (Cat. #TA324793) immunohistochemistry analysis in formalin fixed and paraffin embedded human kidney tissue followed by peroxidase conjugation of the secondary antibody and DAB staining. This data demonstrates the use of NR3C1 Antibody (C-term) for immunohistochemistry. Clinical relevance has not been evaluated.



Confocal immunofluorescent analysis of NR3C1 Antibody (C-term) (Cat#TA324793) with HeLa cell followed by Alexa Fluor 488-conjugated goat anti-rabbit IgG (green). Actin filaments have been labeled with Alexa Fluor 555 phalloidin (red). DAPI was used to stain the cell nuclear (blue).