

## Product datasheet for **TA324792**

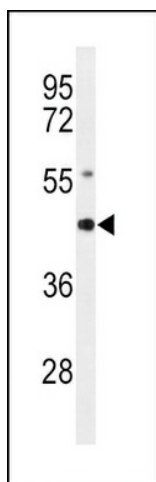
### RAGE (AGER) Rabbit Polyclonal Antibody

#### Product data:

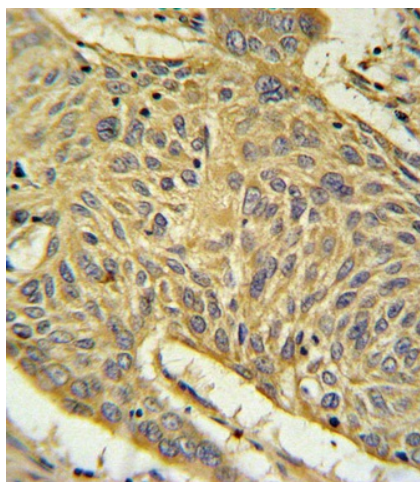
Product Type:	Primary Antibodies
Applications:	FC, IHC, WB
Recommended Dilution:	WB: 1:1000, IHC: 1:10~50, FC: 1:10~50
Reactivity:	Human, Mouse
Host:	Rabbit
Isotype:	IgG
Clonality:	Polyclonal
Immunogen:	This AGER antibody is generated from rabbits immunized with a KLH conjugated synthetic peptide between 24-52 amino acids from the N-terminal region of human AGER.
Formulation:	Purified polyclonal antibody supplied in PBS with 0.09% (W/V) sodium azide.
Concentration:	lot specific
Purification:	This antibody is purified through a protein A column, followed by peptide affinity purification.
Conjugation:	Unconjugated
Storage:	Store at -20°C as received.
Stability:	Stable for 12 months from date of receipt.
Predicted Protein Size:	42803 Da
Gene Name:	advanced glycosylation end product-specific receptor
Database Link:	<a href="#">NP_001127</a> <a href="#">Entrez Gene 11596 Mouse</a> <a href="#">Entrez Gene 177 Human</a> <a href="#">Q15109</a>
Synonyms:	RAGE
Protein Families:	Druggable Genome, Secreted Protein, Transmembrane



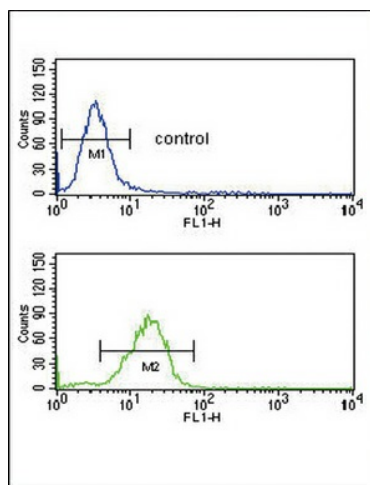
[View online »](#)

**Product images:**

Western blot analysis of AGER Antibody (N-term) (cat. #TA324792) in mouse lung tissue lysates (35ug/lane). AGER (arrow) was detected using the purified Pab.



AGER Antibody (N-term) (Cat. #TA324792) IHC analysis in formalin fixed and paraffin embedded human lung carcinoma followed by peroxidase conjugation of the secondary antibody and DAB staining. This data demonstrates the use of the AGER Antibody (N-term) for immunohistochemistry. Clinical relevance has not been evaluated.



AGER Antibody (N-term) (Cat. #TA324792) flow cytometric analysis of U251 cells (bottom histogram) compared to a negative control cell (top histogram). FITC-conjugated goat-anti-rabbit secondary antibodies were used for the analysis.