

## Product datasheet for **TA324791S**

### CD46 Rabbit Polyclonal Antibody

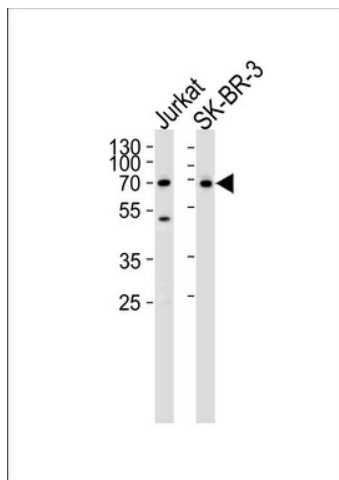
#### Product data:

Product Type:	Primary Antibodies
Applications:	FC, IF, IHC, WB
Recommended Dilution:	WB: 1:1000, IHC: 1:50~100, FC: 1:10~50, IF: 1:10~50
Reactivity:	Human
Host:	Rabbit
Isotype:	IgG
Clonality:	Polyclonal
Immunogen:	This CD46 antibody is generated from rabbits immunized with a KLH conjugated synthetic peptide between 317-343 amino acids from the C-terminal region of human CD46.
Formulation:	Purified polyclonal antibody supplied in PBS with 0.09% (W/V) sodium azide.
Concentration:	lot specific
Purification:	This antibody is purified through a protein A column, followed by peptide affinity purification.
Conjugation:	Unconjugated
Storage:	Store at -20°C as received.
Stability:	Stable for 12 months from date of receipt.
Predicted Protein Size:	43747 Da
Gene Name:	CD46 molecule
Database Link:	<a href="#">NP_758870</a> <a href="#">Entrez Gene 4179 Human</a> <a href="#">P15529</a>
Synonyms:	AHUS2; MCP; MGC26544; MIC10; TLX; TRA2.10
Protein Families:	Druggable Genome, Transmembrane
Protein Pathways:	Complement and coagulation cascades

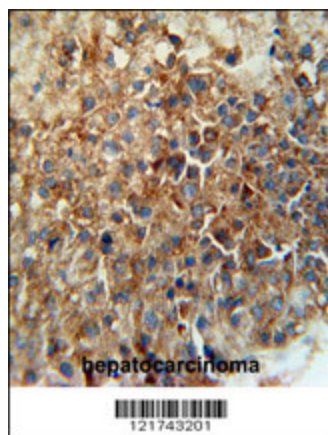


[View online »](#)

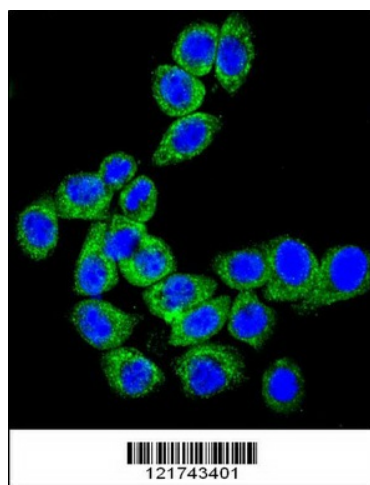
## Product images:



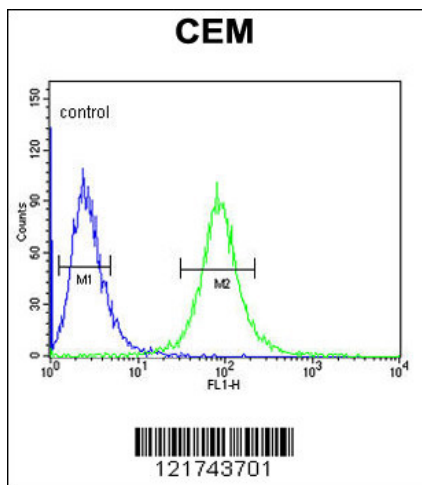
Western blot analysis of lysates from Jurkat, SK-BR-3 cell line (from left to right), using CD46 Antibody (C-term) (Cat. #[TA324791]).[TA324791] was diluted at 1:1000 at each lane. A goat anti-rabbit IgG H&L (HRP) at 1:5000 dilution was used as the secondary antibody. Lysates at 35ug per lane.



CD46 Antibody (C-term) (Cat. #[TA324791]) immunohistochemistry analysis in formalin fixed and paraffin embedded human hepatocarcinoma followed by peroxidase conjugation of the secondary antibody and DAB staining. This data demonstrates the use of the CD46 Antibody (C-term) for immunohistochemistry. Clinical relevance has not been evaluated.



Confocal immunofluorescent analysis of CD46 Antibody (C-term) (Cat. #[TA324791]) with Hela cell followed by Alexa Fluor® 489-conjugated goat anti-rabbit IgG (green). DAPI was used to stain the cell nuclear (blue).



CD46 Antibody (C-term) (Cat. #[TA324791]) flow cytometric analysis of CEM cells (right histogram) compared to a negative control cell (left histogram). FITC-conjugated goat-anti-rabbit secondary antibodies were used for the analysis.