

Product datasheet for **TA324790S**

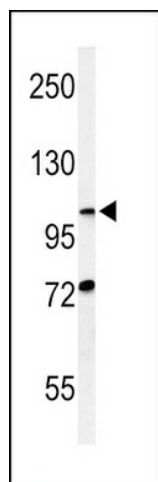
HIF-1 alpha (HIF1A) Rabbit Polyclonal Antibody

Product data:

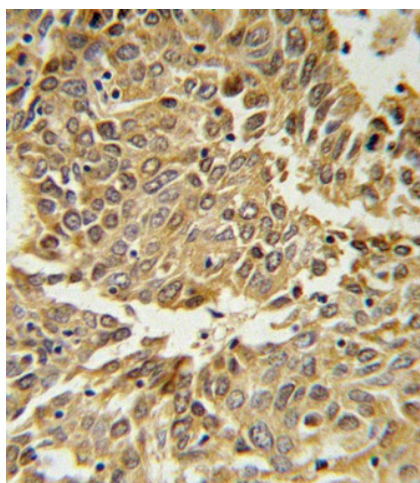
Product Type:	Primary Antibodies
Applications:	IF, IHC, WB
Recommended Dilution:	WB: 1:1000, IHC: 1:10~50, IF: 1:10~50
Reactivity:	Human, Hamster (Predicted: Bovine)
Host:	Rabbit
Isotype:	IgG
Clonality:	Polyclonal
Immunogen:	This HIF1A antibody is generated from rabbits immunized with a KLH conjugated synthetic peptide between 1-30 amino acids from the N-terminal region of human HIF1A.
Formulation:	Purified polyclonal antibody supplied in PBS with 0.09% (W/V) sodium azide.
Concentration:	lot specific
Purification:	This antibody is prepared by Saturated Ammonium Sulfate (SAS) precipitation followed by dialysis against PBS.
Conjugation:	Unconjugated
Storage:	Store at -20°C as received.
Stability:	Stable for 12 months from date of receipt.
Predicted Protein Size:	92670 Da
Gene Name:	hypoxia inducible factor 1 alpha subunit
Database Link:	NP_851397 Entrez Gene 3091 Human Q16665
Synonyms:	bHLHe78; HIF-1-alpha; HIF-1A; HIF-1alpha; HIF1; HIF1-ALPHA; MOP1; PASD8
Protein Families:	Transcription Factors
Protein Pathways:	mTOR signaling pathway, Pathways in cancer, Renal cell carcinoma



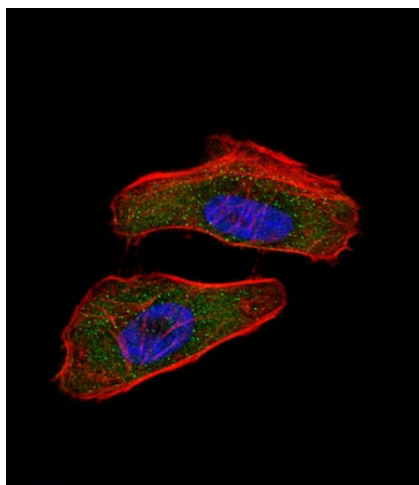
[View online »](#)

Product images:

Western blot analysis of HIF1A Antibody (N-term) (Cat. #[TA324790]) in CHO cell line lysates (35ug/lane). HIF1A (arrow) was detected using the purified Pab.



HIF1A Antibody (N-term) (Cat. #[TA324790]) IHC analysis in formalin fixed and paraffin embedded lung carcinoma followed by peroxidase conjugation of the secondary antibody and DAB staining. This data demonstrates the use of the HIF1A Antibody (N-term) for immunohistochemistry. Clinical relevance has not been evaluated.



IF image of HeLa cell stained with HIF1A Antibody (N-term) (Cat#[TA324790]). HeLa cells were incubated with HIF1A primary antibody (1:25, 1 h at 37°C). For secondary antibody, Alexa Fluor® 488 conjugated donkey anti-rabbit antibody (green) was used (1:400). Cytoplasmic actin was counterstained with Alexa Fluor® 555 (red) conjugated Phalloidin (7 units/ml). Nuclei were counterstained with DAPI (blue). HIF1A immunoreactivity is localized to cytoplasm and nucleus significantly.