

Product datasheet for **TA324787S**

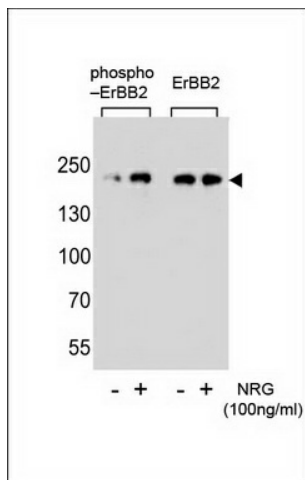
ErbB2 Rabbit Polyclonal Antibody

Product data:

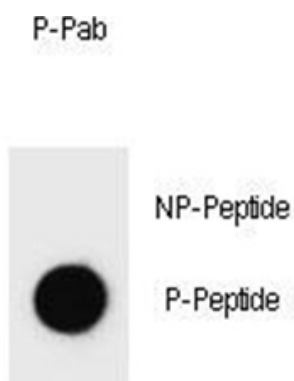
Product Type:	Primary Antibodies
Applications:	Dot, WB
Recommended Dilution:	WB: 1:1000, DB: 1:500
Reactivity:	Mouse
Modifications:	Phospho-specific
Host:	Rabbit
Isotype:	IgG
Clonality:	Polyclonal
Immunogen:	This mouse ERBB2 Antibody is generated from rabbits immunized with a KLH conjugated synthetic phosphopeptide corresponding to amino acid residues surrounding Y1140 of mouse ERBB2.
Formulation:	Purified polyclonal antibody supplied in PBS with 0.09% (W/V) sodium azide.
Concentration:	lot specific
Purification:	This antibody is purified through a protein A column, followed by peptide affinity purification.
Conjugation:	Unconjugated
Storage:	Store at -20°C as received.
Stability:	Stable for 12 months from date of receipt.
Predicted Protein Size:	138579 Da
Gene Name:	erb-b2 receptor tyrosine kinase 2
Database Link:	NP_001003817 Entrez Gene 13866 Mouse P70424
Synonyms:	C-erbB-2; CD340; erbB-2; HER-2; HER-2/neu; HER2; herstatin; NEU; NGL; p185erbB2; TKR1



[View online »](#)

Product images:


Western blot analysis of extracts from SK-BR-3 cell, untreated or treated with NRG, using phospho-mouse ERBB2-Y1140 (left) or mouse ERBB2 antibody (right).



Dot blot analysis of Phospho-mouse ERBB2-Y1140 Antibody Phospho-specific Pab (Cat. # [TA324787]) on nitrocellulose membrane. 50ng of Phospho-peptide or Non Phospho-peptide per dot were adsorbed. Antibody working concentrations are 0.6ug per ml.

Dot Blot