

## Product datasheet for **TA324780S**

### EGFR Rabbit Polyclonal Antibody

#### Product data:

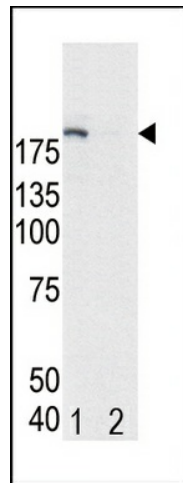
Product Type:	Primary Antibodies
Applications:	Dot, WB
Recommended Dilution:	WB: 1:1000, DB: 1:500
Reactivity:	Human
Modifications:	Phospho-specific
Host:	Rabbit
Isotype:	IgG
Clonality:	Polyclonal
Immunogen:	This EGFR Antibody is generated from rabbits immunized with a KLH conjugated synthetic phosphopeptide corresponding to amino acid residues surrounding Y1172 of human EGFR.
Formulation:	Purified polyclonal antibody supplied in PBS with 0.09% (W/V) sodium azide.
Concentration:	lot specific
Purification:	This antibody is purified through a protein A column, followed by peptide affinity purification.
Conjugation:	Unconjugated
Storage:	Store at -20°C as received.
Stability:	Stable for 12 months from date of receipt.
Predicted Protein Size:	134277 Da
Gene Name:	epidermal growth factor receptor
Database Link:	<a href="#">NP_005219</a> <a href="#">Entrez Gene 1956 Human P00533</a>
Synonyms:	ERBB; ERBB1; HER1; mENA; NISBD2; PIG61
Protein Families:	Adult stem cells, Cancer stem cells, Druggable Genome, ES Cell Differentiation/IPS, Protein Kinase, Secreted Protein, Stem cell relevant signaling - JAK/STAT signaling pathway, Transmembrane



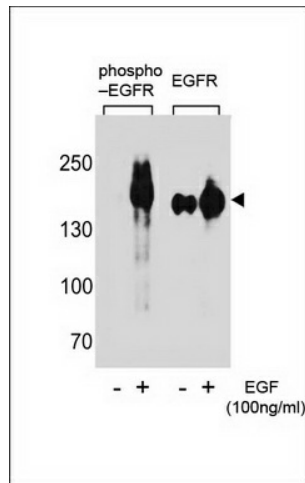
[View online »](#)

**Protein Pathways:**

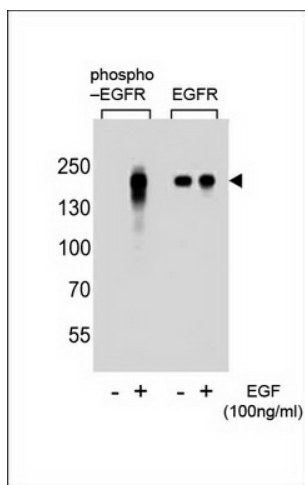
Adherens junction, Bladder cancer, Calcium signaling pathway, Colorectal cancer, Cytokine-cytokine receptor interaction, Dorso-ventral axis formation, Endocytosis, Endometrial cancer, Epithelial cell signaling in Helicobacter pylori infection, ErbB signaling pathway, Focal adhesion, Gap junction, Glioma, GnRH signaling pathway, MAPK signaling pathway, Melanoma, Non-small cell lung cancer, Pancreatic cancer, Pathways in cancer, Prostate cancer, Regulation of actin cytoskeleton

**Product images:**


Western blot analysis of EGFR (arrow) in HeLa cell lysates, either induced (Lane 1) or noninduced with EGF (Lane 2).

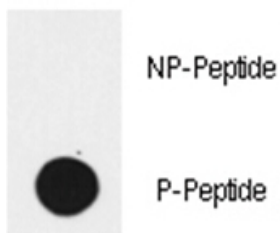


Western blot analysis of extracts from A431 cells, untreated or treated with EGF using Phospho-EGFR (Tyr1172) (left) or EGFR antibody (right).



Western blot analysis of extracts from A431 cells, untreated or treated with EGF, using phospho EGFR-Y1172 (left) or ErBB2 antibody (right)

P-Pab



Dot blot analysis of anti-EGFR-pY1172 Phospho-specific Pab (Cat.#[TA324780]) on nitrocellulose membrane. 50ng of Phospho-peptide or Non Phospho-peptide per dot were adsorbed. Antibody working concentrations are 0.5ug per ml.

Dot Blot