

Product datasheet for **TA324778S**

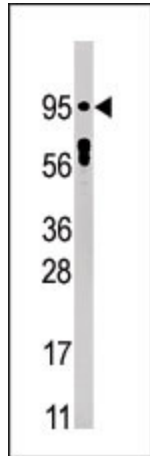
STAT5A Rabbit Polyclonal Antibody

Product data:

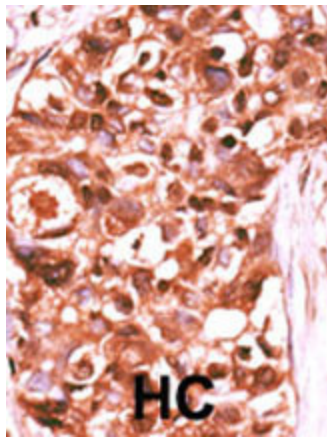
Product Type:	Primary Antibodies
Applications:	IF, IHC, WB
Recommended Dilution:	WB: 1:1000, IF: 1:200, IHC: 1:50~100
Reactivity:	Human
Modifications:	Phospho-specific
Host:	Rabbit
Isotype:	IgG
Clonality:	Polyclonal
Immunogen:	This STAT5a Antibody is generated from rabbits immunized with a KLH conjugated synthetic phosphopeptide corresponding to amino acid residues surrounding Y694 of human STAT5a.
Formulation:	Purified polyclonal antibody supplied in PBS with 0.09% (W/V) sodium azide.
Concentration:	lot specific
Purification:	This antibody is purified through a protein A column, followed by peptide affinity purification.
Conjugation:	Unconjugated
Storage:	Store at -20°C as received.
Stability:	Stable for 12 months from date of receipt.
Predicted Protein Size:	90647 Da
Gene Name:	signal transducer and activator of transcription 5A
Database Link:	NP_003143 Entrez Gene 6776 Human P42229
Synonyms:	MGF; STAT5
Protein Families:	Druggable Genome, ES Cell Differentiation/IPS, Stem cell relevant signaling - DSL/Notch pathway, Stem cell relevant signaling - JAK/STAT signaling pathway, Transcription Factors
Protein Pathways:	Acute myeloid leukemia, Chronic myeloid leukemia, ErbB signaling pathway, Jak-STAT signaling pathway, Pathways in cancer



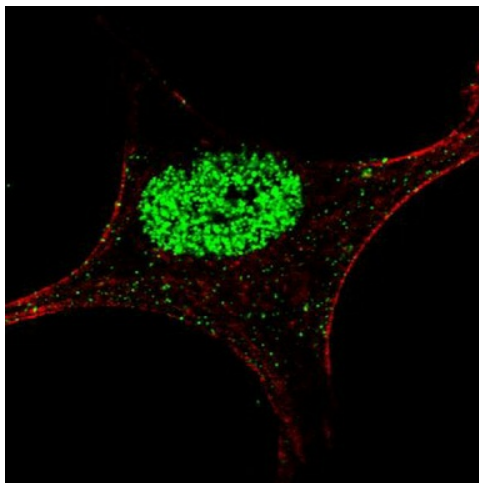
[View online »](#)

Product images:

Western blot analysis of anti-Phospho-STAT5 Pab (Cat. #[TA324778]) in HepG2 cell line lysate (35ug/lane). Phospho-STAT5 (arrow) was detected using the purified Pab.



Formalin-fixed and paraffin-embedded human cancer tissue reacted with the primary antibody, which was peroxidase-conjugated to the secondary antibody, followed by DAB staining. This data demonstrates the use of this antibody for immunohistochemistry; clinical relevance has not been evaluated. BC = breast carcinoma; HC = hepatocarcinoma.



IF image of an SY5Y cell stained with [TA324778] Phospho-STAT5a antibody. SY5Y cells were incubated with [TA324778] Phospho-STAT5a primary antibody (1:200, 2 h at RT). For secondary antibody, Alexa Fluor® 488 conjugated donkey anti-rabbit antibody (green) was used (1:1000). Cytoplasmic actin was counterstained with Alexa Fluor® 555 (red) conjugated Phalloidin. Nuclei were counterstained with Hoechst 33342 (blue) (not shown). Phospho-STAT5a immunoreactivity is localized exclusively to the nucleus.