

Product datasheet for **TA324777S**

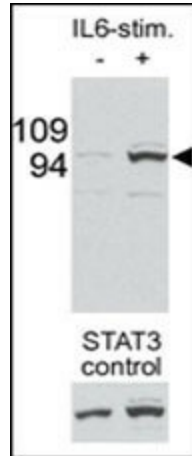
STAT3 Rabbit Polyclonal Antibody

Product data:

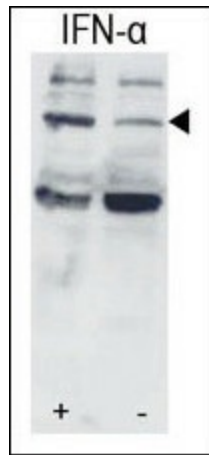
Product Type:	Primary Antibodies
Applications:	IF, IHC, WB
Recommended Dilution:	IF: 1:200, WB: 1:1000, IHC: 1:50~100
Reactivity:	Human, Mouse
Modifications:	Phospho-specific
Host:	Rabbit
Isotype:	IgG
Clonality:	Polyclonal
Immunogen:	This STAT3 Antibody is generated from rabbits immunized with a KLH conjugated synthetic phosphopeptide corresponding to amino acid residues surrounding S727 of human STAT3.
Formulation:	Purified polyclonal antibody supplied in PBS with 0.09% (W/V) sodium azide.
Concentration:	lot specific
Purification:	This antibody is purified through a protein A column, followed by peptide affinity purification.
Conjugation:	Unconjugated
Storage:	Store at -20°C as received.
Stability:	Stable for 12 months from date of receipt.
Predicted Protein Size:	88068 Da
Gene Name:	signal transducer and activator of transcription 3
Database Link:	NP_003141 Entrez Gene 20848 Mouse Entrez Gene 6774 Human P40763
Synonyms:	ADMIO; APRF; HIES
Protein Families:	Druggable Genome, Transcription Factors
Protein Pathways:	Acute myeloid leukemia, Adipocytokine signaling pathway, Chemokine signaling pathway, Jak-STAT signaling pathway, Pancreatic cancer, Pathways in cancer



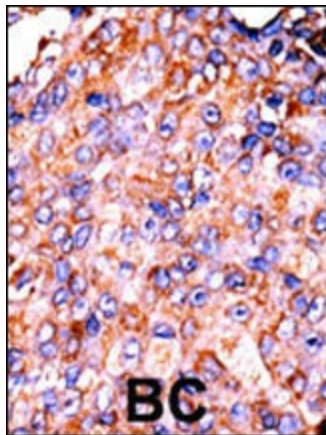
[View online »](#)

Product images:


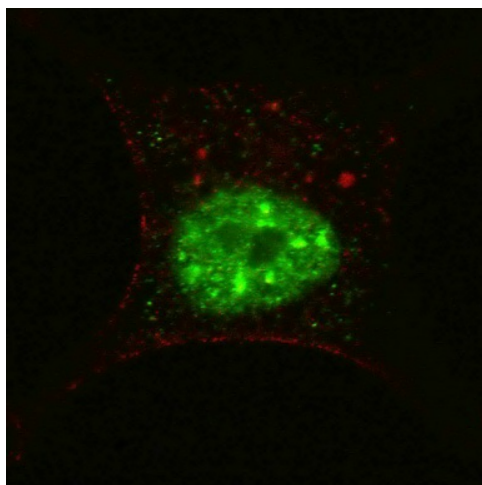
The Phospho-STAT3-S727 Pab (Cat. #3260a) is used in western blot to detect Ser727-phosphorylated STAT3 in mouse liver tissue lysates collected before (-) or after (+) stimulation obtained by IL-6 injection in mouse portal vein. Data is kindly provided by Drs. E. Bard-Chapeau and G-S. Feng from the Burnham Institute (La Jolla, CA).



The phospho-STAT3-Ser727 Pab (Cat. # [TA324777]) is used in Western blot to detect Ser727-phosphorylated STAT3 in HL-60 tissue lysates collected before (-) or after (+) stimulation obtained by IFN-α.



Formalin-fixed and paraffin-embedded human cancer tissue reacted with the primary antibody, which was peroxidase-conjugated to the secondary antibody, followed by AEC staining. This data demonstrates the use of this antibody for immunohistochemistry; clinical relevance has not been evaluated. BC = breast carcinoma; HC = hepatocarcinoma.



IF image of SY5Y cells stained with phospho-STAT3-S727 antibody. SY5Y cells were incubated with [TA324777] phospho-STAT3-S727 primary antibody (1:200, 2 h at RT). For secondary antibody, Alexa Fluor® 488 conjugated donkey anti-rabbit antibody (green) was used (1:1000, 1h). Nuclei were counterstained with Hoechst 33342 (blue). Note the highly specific localization of the phospho-STAT3 immunosignal mainly to the nucleus.