

## Product datasheet for **TA324776**

### p53 (TP53) Rabbit Polyclonal Antibody

#### Product data:

Product Type:	Primary Antibodies
Applications:	Dot, IHC, WB
Recommended Dilution:	DB: 1:500, WB: 1:1000, IHC: 1:50~100
Reactivity:	Human, Mouse (Predicted: Pig, Monkey, Rabbit)
Modifications:	Phospho-specific
Host:	Rabbit
Isotype:	IgG
Clonality:	Polyclonal
Immunogen:	This p53 Antibody is generated from rabbits immunized with a KLH conjugated synthetic phosphopeptide corresponding to amino acid residues surrounding T18 of human p53.
Formulation:	Purified polyclonal antibody supplied in PBS with 0.09% (W/V) sodium azide.
Concentration:	lot specific
Purification:	This antibody is purified through a protein A column, followed by peptide affinity purification.
Conjugation:	Unconjugated
Storage:	Store at -20°C as received.
Stability:	Stable for 12 months from date of receipt.
Predicted Protein Size:	43653 Da
Gene Name:	tumor protein p53
Database Link:	<a href="#">NP_000537</a> <a href="#">Entrez Gene 22059 Mouse</a> <a href="#">Entrez Gene 716170 Monkey</a> <a href="#">Entrez Gene 7157 Human</a> <a href="#">P04637</a>
Synonyms:	BCC7; LFS1; P53; TRP53
Protein Families:	Druggable Genome, Stem cell - Pluripotency, Transcription Factors

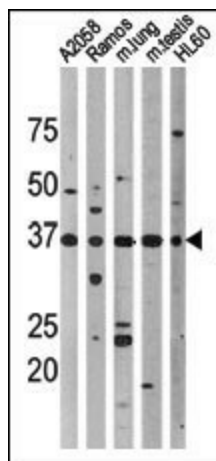


[View online »](#)

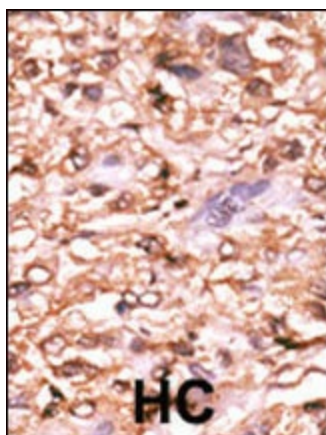
**Protein Pathways:**

Amyotrophic lateral sclerosis (ALS), Apoptosis, Basal cell carcinoma, Bladder cancer, Cell cycle, Chronic myeloid leukemia, Colorectal cancer, Endometrial cancer, Glioma, Huntington's disease, MAPK signaling pathway, Melanoma, Neurotrophin signaling pathway, Non-small cell lung cancer, p53 signaling pathway, Pancreatic cancer, Pathways in cancer, Prostate cancer, Small cell lung cancer, Thyroid cancer, Wnt signaling pathway

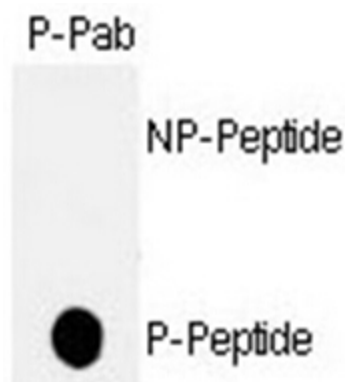
**Product images:**



Western blot analysis of anti-Phospho-p53-T18 Pab (cat# TA324776) in, from left to right, A2058, Ramos, mouse lung, mouse testis, and HL60 cell line lysates. Phospho-p53-T18 (arrow) was detected using the purified Pab.



Formalin-fixed and paraffin-embedded human cancer tissue reacted with the primary antibody, which was peroxidase-conjugated to the secondary antibody, followed by AEC staining. This data demonstrates the use of this antibody for immunohistochemistry; clinical relevance has not been evaluated. BC = breast carcinoma; HC = hepatocarcinoma.



Dot blot analysis of anti-hp53-T18 Phospho-specific Pab (Cat. #TA324776) on nitrocellulose membrane. 50ng of nonphospho-peptide or phospho-peptide were adsorbed on their respective dots. Antibody working concentration was 0.5ug per ml.