

## Product datasheet for **TA324774S**

### **p53 (TP53) Rabbit Polyclonal Antibody**

#### **Product data:**

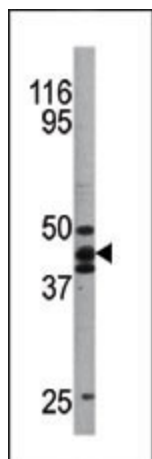
<b>Product Type:</b>	Primary Antibodies
<b>Applications:</b>	IHC, WB
<b>Recommended Dilution:</b>	WB: 1:1000, IHC: 1:50~100
<b>Reactivity:</b>	Human (Predicted: Hamster, Pig, Monkey, Rabbit)
<b>Modifications:</b>	Phospho-specific
<b>Host:</b>	Rabbit
<b>Isotype:</b>	IgG
<b>Clonality:</b>	Polyclonal
<b>Immunogen:</b>	This p53 Antibody is generated from rabbits immunized with a KLH conjugated synthetic phosphopeptide corresponding to amino acid residues surrounding S20 of human p53.
<b>Formulation:</b>	Purified polyclonal antibody supplied in PBS with 0.09% (W/V) sodium azide.
<b>Concentration:</b>	lot specific
<b>Purification:</b>	This antibody is purified through a protein A column, followed by peptide affinity purification.
<b>Conjugation:</b>	Unconjugated
<b>Storage:</b>	Store at -20°C as received.
<b>Stability:</b>	Stable for 12 months from date of receipt.
<b>Predicted Protein Size:</b>	43653 Da
<b>Gene Name:</b>	tumor protein p53
<b>Database Link:</b>	<a href="#">NP_000537</a> <a href="#">Entrez Gene 716170 Monkey</a> <a href="#">Entrez Gene 7157 Human</a> <a href="#">P04637</a>
<b>Synonyms:</b>	BCC7; LFS1; P53; TRP53
<b>Protein Families:</b>	Druggable Genome, Stem cell - Pluripotency, Transcription Factors



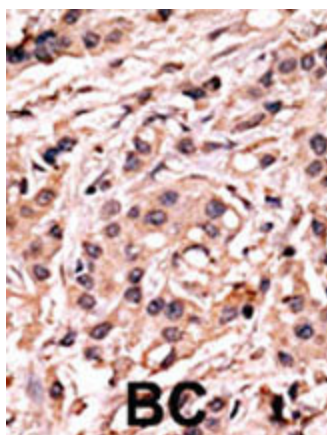
[View online »](#)

**Protein Pathways:**

Amyotrophic lateral sclerosis (ALS), Apoptosis, Basal cell carcinoma, Bladder cancer, Cell cycle, Chronic myeloid leukemia, Colorectal cancer, Endometrial cancer, Glioma, Huntington's disease, MAPK signaling pathway, Melanoma, Neurotrophin signaling pathway, Non-small cell lung cancer, p53 signaling pathway, Pancreatic cancer, Pathways in cancer, Prostate cancer, Small cell lung cancer, Thyroid cancer, Wnt signaling pathway

**Product images:**

Western blot analysis of anti-hp53 Pab (Cat. # [TA324774]) in A2058 cell line lysate. hp53 (arrow) was detected using the purified Pab.



Formalin-fixed and paraffin-embedded human cancer tissue reacted with the primary antibody, which was peroxidase-conjugated to the secondary antibody, followed by AEC staining. This data demonstrates the use of this antibody for immunohistochemistry; clinical relevance has not been evaluated. BC = breast carcinoma; HC = hepatocarcinoma.