

Product datasheet for TA324770S

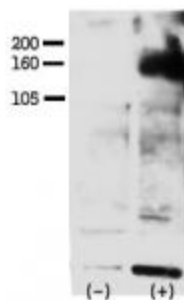
ErbB 4 (ERBB4) Rabbit Polyclonal Antibody

Product data:

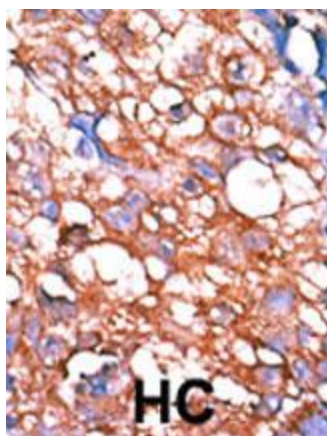
Product Type:	Primary Antibodies
Applications:	IF, IHC, WB
Recommended Dilution:	WB: 1:1000, IHC: 1:50~100, IF: 1:10~50
Reactivity:	Human (Predicted: Mouse, Rat)
Modifications:	Phospho-specific
Host:	Rabbit
Isotype:	IgG
Clonality:	Polyclonal
Immunogen:	This HER4 Antibody is generated from rabbits immunized with a KLH conjugated synthetic phosphopeptide corresponding to amino acid residues surrounding Y1162 of human HER4.
Formulation:	Purified polyclonal antibody supplied in PBS with 0.09% (W/V) sodium azide.
Concentration:	lot specific
Purification:	This antibody is purified through a protein A column, followed by peptide affinity purification.
Conjugation:	Unconjugated
Storage:	Store at -20°C as received.
Stability:	Stable for 12 months from date of receipt.
Predicted Protein Size:	146808 Da
Gene Name:	erb-b2 receptor tyrosine kinase 4
Database Link:	NP_005226 Entrez Gene 13869 Mouse Entrez Gene 59323 Rat Entrez Gene 2066 Human Q15303
Synonyms:	ALS19; HER4; p180erbB4
Protein Families:	Druggable Genome, Protein Kinase, Transmembrane
Protein Pathways:	Calcium signaling pathway, Endocytosis, ErbB signaling pathway


[View online »](#)

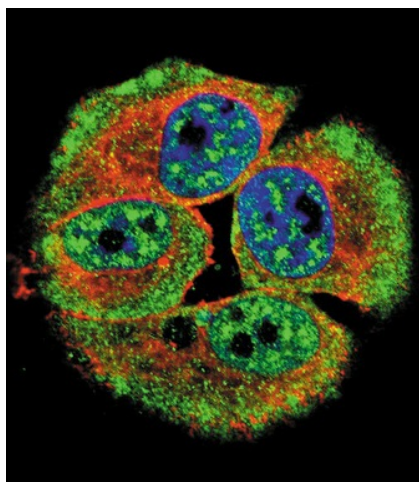
Product images:



Phospho-HER4-Y1162 Antibody (cat# [TA324770]) was used to detect Phospho-HER4-Y1162 in FG pancreatic carcinoma cell line lysate.



Formalin-fixed and paraffin-embedded human cancer tissue reacted with the primary antibody, which was peroxidase-conjugated to the secondary antibody, followed by AEC staining. This data demonstrates the use of this antibody for immunohistochemistry; clinical relevance has not been evaluated. BC = breast carcinoma; HC = hepatocarcinoma.



Confocal immunofluorescent analysis of Phospho-HER4-Y1162 Antibody (Cat#[TA324770]) with MCF-7 cell followed by Alexa Fluor 488-conjugated goat anti-rabbit IgG (green). Actin filaments have been labeled with Alexa Fluor 555 phalloidin (red). DAPI was used to stain the cell nuclear (blue).