

Product datasheet for **TA324769S**

GSK3 beta (GSK3B) Rabbit Polyclonal Antibody

Product data:

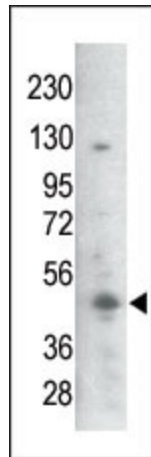
Product Type:	Primary Antibodies
Applications:	IHC, WB
Recommended Dilution:	WB: 1:1000, IHC: 1:50~100
Reactivity:	Human, Mouse
Modifications:	Phospho-specific
Host:	Rabbit
Isotype:	IgG
Clonality:	Polyclonal
Immunogen:	This GSK3B Antibody is generated from rabbits immunized with a KLH conjugated synthetic phosphopeptide corresponding to amino acid residues surrounding S21/29 of human GSK3B.
Formulation:	Purified polyclonal antibody supplied in PBS with 0.09% (W/V) sodium azide.
Concentration:	lot specific
Purification:	This antibody is purified through a protein A column, followed by peptide affinity purification.
Conjugation:	Unconjugated
Storage:	Store at -20°C as received.
Stability:	Stable for 12 months from date of receipt.
Predicted Protein Size:	46744 Da
Gene Name:	glycogen synthase kinase 3 beta
Database Link:	NP_002084 Entrez Gene 56637 Mouse Entrez Gene 2932 Human P49841
Synonyms:	glycogen synthase kinase-3 beta; glycogen synthase kinase 3 beta; GSK3beta isoform
Protein Families:	Druggable Genome, Protein Kinase



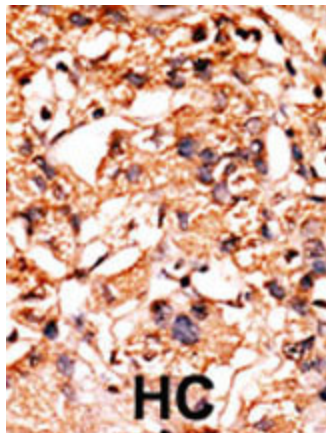
[View online »](#)

Protein Pathways:

Alzheimer's disease, Axon guidance, Basal cell carcinoma, B cell receptor signaling pathway, Cell cycle, Chemokine signaling pathway, Colorectal cancer, Endometrial cancer, ErbB signaling pathway, Focal adhesion, Hedgehog signaling pathway, Insulin signaling pathway, Melanogenesis, Neurotrophin signaling pathway, Pathways in cancer, Prostate cancer, T cell receptor signaling pathway, Wnt signaling pathway

Product images:

The anti-Phospho-GSK3B-S21/29 Pab (Cat. # [TA324769]) is used in Western blot to detect Phospho-GSK3B-S21/29 in mouse thymus tissue lysate.



Formalin-fixed and paraffin-embedded human cancer tissue reacted with the primary antibody, which was peroxidase-conjugated to the secondary antibody, followed by AEC staining. This data demonstrates the use of this antibody for immunohistochemistry; clinical relevance has not been evaluated. BC = breast carcinoma; HC = hepatocarcinoma.