

Product datasheet for **TA324767S**

c-Jun (JUN) Rabbit Polyclonal Antibody

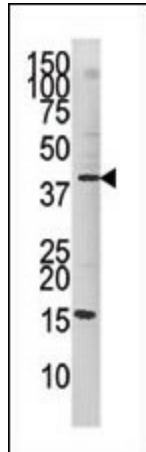
Product data:

Product Type:	Primary Antibodies
Applications:	Dot, IHC, WB
Recommended Dilution:	DB: 1:500, WB: 1:1000, IHC: 1:50~100
Reactivity:	Human (Predicted: Mouse, Rat, Bovine)
Modifications:	Phospho-specific
Host:	Rabbit
Isotype:	IgG
Clonality:	Polyclonal
Immunogen:	This cJun Antibody is generated from rabbits immunized with a KLH conjugated synthetic phosphopeptide corresponding to amino acid residues surrounding S63 of human cJun.
Formulation:	Purified polyclonal antibody supplied in PBS with 0.09% (W/V) sodium azide.
Concentration:	lot specific
Purification:	This antibody is purified through a protein G column, followed by dialysis against PBS.
Conjugation:	Unconjugated
Storage:	Store at -20°C as received.
Stability:	Stable for 12 months from date of receipt.
Predicted Protein Size:	35676 Da
Gene Name:	Jun proto-oncogene, AP-1 transcription factor subunit
Database Link:	NP_002219 Entrez Gene 16476 Mouse Entrez Gene 24516 Rat Entrez Gene 3725 Human P05412
Synonyms:	AP-1; AP1; c-Jun
Protein Families:	Druggable Genome, ES Cell Differentiation/IPS, Transcription Factors
Protein Pathways:	B cell receptor signaling pathway, Colorectal cancer, Epithelial cell signaling in Helicobacter pylori infection, ErbB signaling pathway, Focal adhesion, GnRH signaling pathway, MAPK signaling pathway, Neurotrophin signaling pathway, Pathways in cancer, Renal cell carcinoma, T cell receptor signaling pathway, Toll-like receptor signaling pathway, Wnt signaling pathway

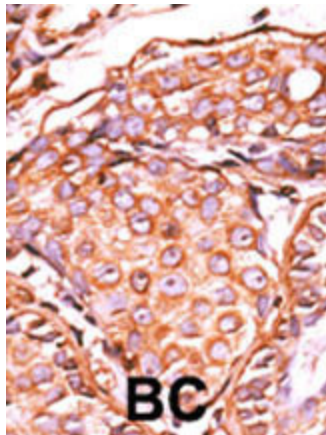


[View online »](#)

Product images:

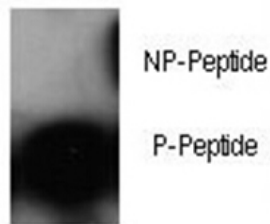


Western blot analysis of anti-Phospho-cJun-pS63 Pab (Cat. #[TA324767]) in mouse kidney tissue lysate (35ug/lane). cJun-pS63 (arrow) was detected using the purified Pab.



Formalin-fixed and paraffin-embedded human cancer tissue reacted with the primary antibody, which was peroxidase-conjugated to the secondary antibody, followed by AEC staining. This data demonstrates the use of this antibody for immunohistochemistry; clinical relevance has not been evaluated. BC = breast carcinoma; HC = hepatocarcinoma.

P-Pab



Dot blot analysis of anti-Phospho-cJun-S63 Antibody (Cat.#[TA324767]) on nitrocellulose membrane. 50ng of Phospho-peptide or Non Phospho-peptide per dot were adsorbed. Antibody working concentrations are 0.5ug per ml.

Dot Blot