

## Product datasheet for TA324766S

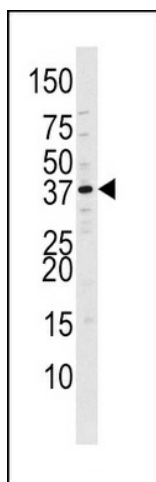
### CDK7 Rabbit Polyclonal Antibody

#### Product data:

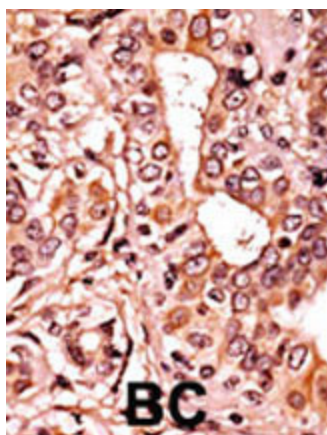
Product Type:	Primary Antibodies
Applications:	Dot, IHC, WB
Recommended Dilution:	WB: 1:1000, DB: 1:500, IHC: 1:50~100
Reactivity:	Human (Predicted: Mouse)
Modifications:	Phospho-specific
Host:	Rabbit
Isotype:	IgG
Clonality:	Polyclonal
Immunogen:	This CDK7 Antibody is generated from rabbits immunized with a KLH conjugated synthetic phosphopeptide corresponding to amino acid residues surrounding T170 of human CDK7.
Formulation:	Purified polyclonal antibody supplied in PBS with 0.09% (W/V) sodium azide.
Concentration:	lot specific
Purification:	This antibody is purified through a protein G column, followed by dialysis against PBS.
Conjugation:	Unconjugated
Storage:	Store at -20°C as received.
Stability:	Stable for 12 months from date of receipt.
Predicted Protein Size:	39038 Da
Gene Name:	cyclin-dependent kinase 7
Database Link:	<a href="#">NP_001790</a> <a href="#">Entrez Gene 12572 Mouse</a> <a href="#">Entrez Gene 1022 Human</a> <a href="#">P50613</a>
Synonyms:	CAK1; CDKN7; HCAK; MO15; p39MO15; STK1
Protein Families:	Druggable Genome, Protein Kinase, Stem cell - Pluripotency, Transcription Factors
Protein Pathways:	Cell cycle, Nucleotide excision repair


[View online »](#)

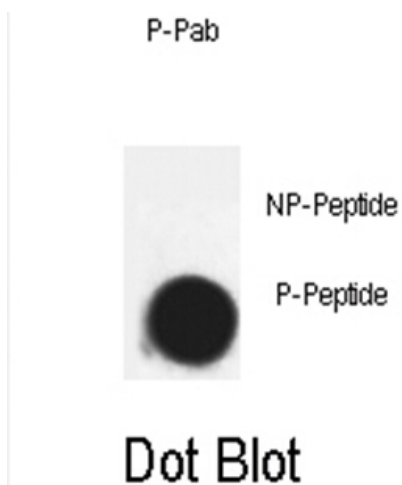
## Product images:



The CDK7-T170 Pab (Cat. #TA324766) is used in Western blot to detect CDK7-T170 in Ramos tissue lysate.



Formalin-fixed and paraffin-embedded human cancer tissue reacted with the primary antibody, which was peroxidase-conjugated to the secondary antibody, followed by AEC staining. This data demonstrates the use of this antibody for immunohistochemistry; clinical relevance has not been evaluated. BC = breast carcinoma; HC = hepatocarcinoma.



Dot blot analysis of Phospho-Cdk7-T170 Pab (Cat. #TA324766] on nitrocellulose membrane. 50ng of Phospho-peptide or Non Phospho-peptide per dot were adsorbed. Antibody working concentrations are 0.5ug per ml.