

Product datasheet for **TA324763S**

BAD Rabbit Polyclonal Antibody

Product data:

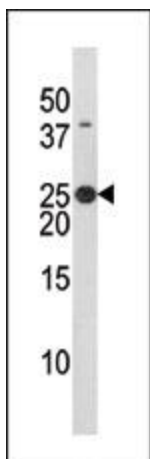
Product Type:	Primary Antibodies
Applications:	IHC, WB
Recommended Dilution:	IHC: 1:50~100, WB: 1:1000
Reactivity:	Human (Predicted: Mouse, Rat)
Modifications:	Phospho-specific
Host:	Rabbit
Isotype:	IgG
Clonality:	Polyclonal
Immunogen:	This Bad Antibody is generated from rabbits immunized with a KLH conjugated synthetic phosphopeptide corresponding to amino acid residues surrounding S134 of human Bad.
Formulation:	Purified polyclonal antibody supplied in PBS with 0.09% (W/V) sodium azide.
Concentration:	lot specific
Purification:	This antibody is purified through a protein A column, followed by peptide affinity purification.
Conjugation:	Unconjugated
Storage:	Store at -20°C as received.
Stability:	Stable for 12 months from date of receipt.
Predicted Protein Size:	18392 Da
Gene Name:	BCL2 associated agonist of cell death
Database Link:	NP_004313 Entrez Gene 12015 Mouse Entrez Gene 64639 Rat Entrez Gene 572 Human Q92934
Synonyms:	BBC2; BCL2L8
Protein Families:	Druggable Genome



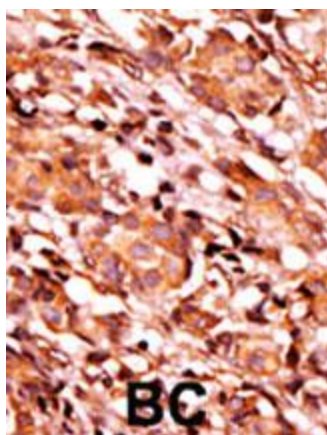
[View online »](#)

Protein Pathways:

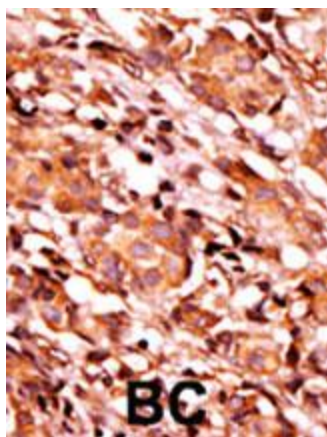
Acute myeloid leukemia, Alzheimer's disease, Amyotrophic lateral sclerosis (ALS), Apoptosis, Chronic myeloid leukemia, Colorectal cancer, Endometrial cancer, ErbB signaling pathway, Focal adhesion, Insulin signaling pathway, Melanoma, Neurotrophin signaling pathway, Non-small cell lung cancer, Pancreatic cancer, Pathways in cancer, Prostate cancer, VEGF signaling pathway

Product images:

The anti-Phospho-Bad-S134 Pab (Cat. # [TA324763]) is used in Western blot to detect Phospho-Bad-S134 in HL60 tissue lysate



Formalin-fixed and paraffin-embedded human cancer tissue reacted with the primary antibody, which was peroxidase-conjugated to the secondary antibody, followed by AEC staining. This data demonstrates the use of this antibody for immunohistochemistry; clinical relevance has not been evaluated. BC = breast carcinoma; HC = hepatocarcinoma.



Formalin-fixed and paraffin-embedded human cancer tissue reacted with the primary antibody, which was peroxidase-conjugated to the secondary antibody, followed by AEC staining. This data demonstrates the use of this antibody for immunohistochemistry; clinical relevance has not been evaluated. BC = breast carcinoma; HC = hepatocarcinoma.