

Product datasheet for **TA324759S**

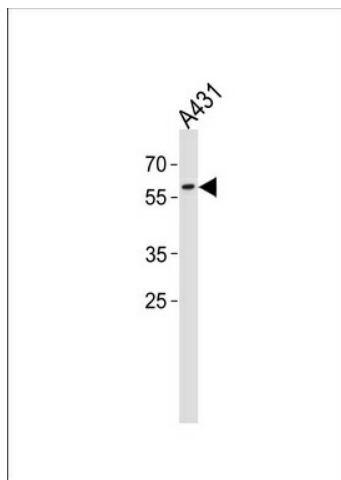
PAX3 Rabbit Polyclonal Antibody

Product data:

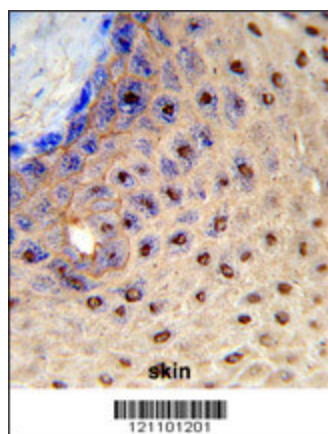
Product Type:	Primary Antibodies
Applications:	FC, IHC, WB
Recommended Dilution:	WB: 1:1000, IHC: 1:50~100, FC: 1:10~50
Reactivity:	Human (Predicted: Mouse)
Host:	Rabbit
Isotype:	IgG
Clonality:	Polyclonal
Immunogen:	This PAX3 antibody is generated from rabbits immunized with a KLH conjugated synthetic peptide between 98-126 amino acids from the N-terminal region of human PAX3.
Formulation:	Purified polyclonal antibody supplied in PBS with 0.09% (W/V) sodium azide.
Concentration:	lot specific
Purification:	This antibody is purified through a protein A column, followed by peptide affinity purification.
Conjugation:	Unconjugated
Storage:	Store at -20°C as received.
Stability:	Stable for 12 months from date of receipt.
Predicted Protein Size:	52968 Da
Gene Name:	paired box 3
Database Link:	NP_852126 Entrez Gene 18505 Mouse Entrez Gene 5077 Human P23760
Synonyms:	CDHS; HUP2; WS1; WS3
Protein Families:	Adult stem cells, Druggable Genome, Embryonic stem cells, ES Cell Differentiation/IPS, Transcription Factors



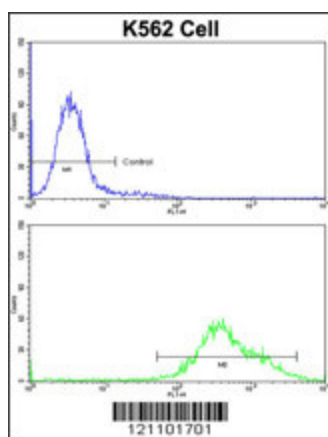
[View online »](#)

Product images:

PAX3 Antibody (N-term) (Cat. #[TA324759])
western blot analysis in A431 cell line lysates
(35ug/lane). This demonstrates the PAX3 antibody
detected the PAX3 protein (arrow).



Formalin-fixed and paraffin-embedded human
skin reacted with PAX3 Antibody (N-term), which
was peroxidase-conjugated to the secondary
antibody, followed by DAB staining. This data
demonstrates the use of this antibody for
immunohistochemistry; clinical relevance has not
been evaluated.



Flow cytometric analysis of K562 cells using PAX3 Antibody (N-term) (bottom histogram) compared to a negative control cell (top histogram) FITC-conjugated goat-anti-rabbit secondary antibodies were used for the analysis.