

## Product datasheet for **TA324759**

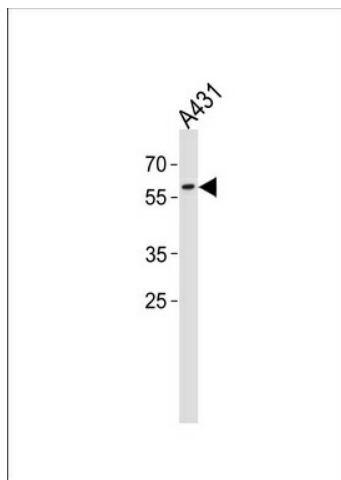
### **PAX3 Rabbit Polyclonal Antibody**

#### **Product data:**

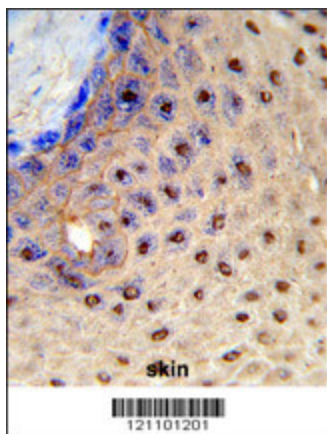
<b>Product Type:</b>	Primary Antibodies
<b>Applications:</b>	FC, IHC, WB
<b>Recommended Dilution:</b>	WB: 1:1000, IHC: 1:50~100, FC: 1:10~50
<b>Reactivity:</b>	Human (Predicted: Mouse)
<b>Host:</b>	Rabbit
<b>Isotype:</b>	IgG
<b>Clonality:</b>	Polyclonal
<b>Immunogen:</b>	This PAX3 antibody is generated from rabbits immunized with a KLH conjugated synthetic peptide between 98-126 amino acids from the N-terminal region of human PAX3.
<b>Formulation:</b>	Purified polyclonal antibody supplied in PBS with 0.09% (W/V) sodium azide.
<b>Concentration:</b>	lot specific
<b>Purification:</b>	This antibody is purified through a protein A column, followed by peptide affinity purification.
<b>Conjugation:</b>	Unconjugated
<b>Storage:</b>	Store at -20°C as received.
<b>Stability:</b>	Stable for 12 months from date of receipt.
<b>Predicted Protein Size:</b>	52968 Da
<b>Gene Name:</b>	paired box 3
<b>Database Link:</b>	<a href="#">NP_852126</a> <a href="#">Entrez Gene 18505 Mouse</a> <a href="#">Entrez Gene 5077 Human</a> <a href="#">P23760</a>
<b>Synonyms:</b>	CDHS; HUP2; WS1; WS3
<b>Protein Families:</b>	Adult stem cells, Druggable Genome, Embryonic stem cells, ES Cell Differentiation/IPS, Transcription Factors



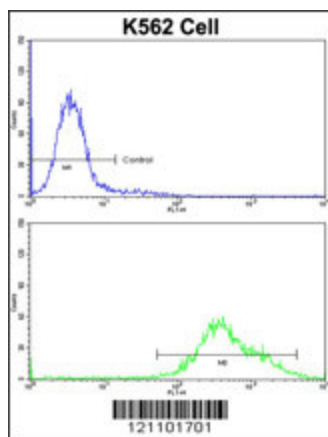
[View online »](#)

**Product images:**

PAX3 Antibody (N-term) (Cat. #TA324759) western blot analysis in A431 cell line lysates (35ug/lane). This demonstrates the PAX3 antibody detected the PAX3 protein (arrow).



Formalin-fixed and paraffin-embedded human skin reacted with PAX3 Antibody (N-term), which was peroxidase-conjugated to the secondary antibody, followed by DAB staining. This data demonstrates the use of this antibody for immunohistochemistry; clinical relevance has not been evaluated.



Flow cytometric analysis of K562 cells using PAX3 Antibody (N-term) (bottom histogram) compared to a negative control cell (top histogram) FITC-conjugated goat-anti-rabbit secondary antibodies were used for the analysis.