

Product datasheet for **TA324758S**

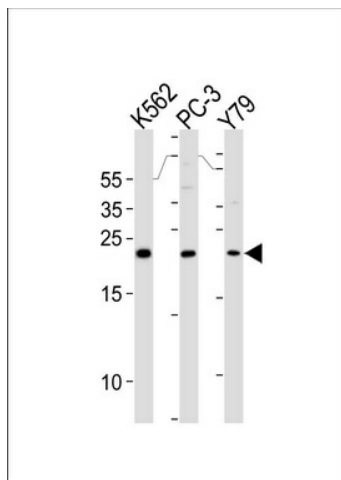
GST3 (GSTP1) Rabbit Polyclonal Antibody

Product data:

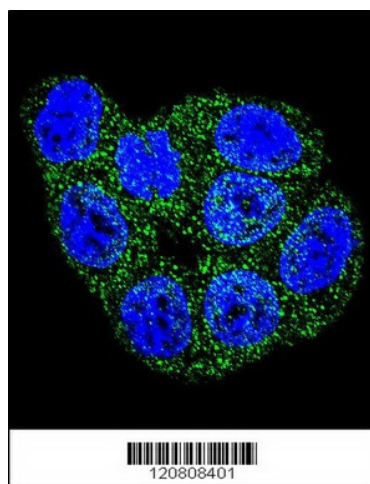
Product Type:	Primary Antibodies
Applications:	FC, IF, WB
Recommended Dilution:	WB: 1:1000, FC: 1:10~50, IF: 1:10~50
Reactivity:	Human
Host:	Rabbit
Isotype:	IgG
Clonality:	Polyclonal
Immunogen:	This GSTP1 antibody is generated from rabbits immunized with a KLH conjugated synthetic peptide between 165-192 amino acids from the C-terminal region of human GSTP1.
Formulation:	Purified polyclonal antibody supplied in PBS with 0.09% (W/V) sodium azide.
Concentration:	lot specific
Purification:	This antibody is prepared by Saturated Ammonium Sulfate (SAS) precipitation followed by dialysis against PBS.
Conjugation:	Unconjugated
Storage:	Store at -20°C as received.
Stability:	Stable for 12 months from date of receipt.
Predicted Protein Size:	23356 Da
Gene Name:	glutathione S-transferase pi 1
Database Link:	NP_000843 Entrez Gene 2950 Human P09211
Synonyms:	DFN7; FAEES3; GST3; GSTP; HEL-S-22; PI
Protein Families:	Druggable Genome
Protein Pathways:	Drug metabolism - cytochrome P450, Glutathione metabolism, Metabolism of xenobiotics by cytochrome P450, Pathways in cancer, Prostate cancer



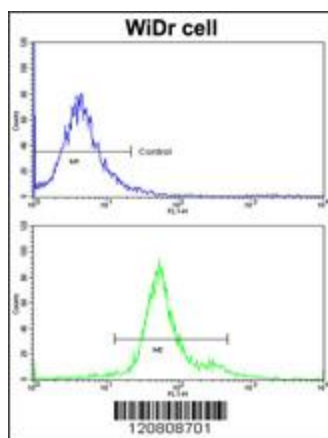
[View online »](#)

Product images:


GSTP1 Antibody (C-term) (Cat. #[TA324758]) western blot analysis in K562, PC-3, Y79 cell line lysates (35ug/lane). This demonstrates the GSTP1 antibody detected the GSTP1 protein (arrow).



Confocal immunofluorescent analysis of GSTP1 Antibody (C-term) (Cat#[TA324758]) with HeLa cell followed by Alexa Fluor 488-conjugated goat anti-rabbit IgG (green). DAPI was used to stain the cell nuclear (blue).



Flow cytometric analysis of WiDr cells using GSTP1 Antibody (C-term) (bottom histogram) compared to a negative control cell (top histogram). FITC-conjugated goat-anti-rabbit secondary antibodies were used for the analysis.