

Product datasheet for **TA324757S**

glutathione S transferase Omega 1 (GSTO1) Rabbit Polyclonal Antibody

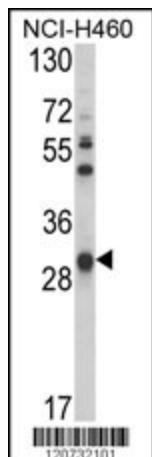
Product data:

Product Type:	Primary Antibodies
Applications:	FC, IHC, WB
Recommended Dilution:	WB: 1:1000, IHC: 1:50~100, FC: 1:10~50
Reactivity:	Human
Host:	Rabbit
Isotype:	IgG
Clonality:	Polyclonal
Immunogen:	This GSTO1 antibody is generated from rabbits immunized with a KLH conjugated synthetic peptide between 126-155 amino acids from the Central region of human GSTO1.
Formulation:	Purified polyclonal antibody supplied in PBS with 0.09% (W/V) sodium azide.
Concentration:	lot specific
Purification:	This antibody is prepared by Saturated Ammonium Sulfate (SAS) precipitation followed by dialysis against PBS.
Conjugation:	Unconjugated
Storage:	Store at -20°C as received.
Stability:	Stable for 12 months from date of receipt.
Predicted Protein Size:	27566 Da
Gene Name:	glutathione S-transferase omega 1
Database Link:	NP_001177931 Entrez Gene 9446 Human P78417
Synonyms:	GSTO 1-1; GSTTLp28; HEL-S-21; P28; SPG-R
Protein Families:	Druggable Genome
Protein Pathways:	Drug metabolism - cytochrome P450, Glutathione metabolism, Metabolism of xenobiotics by cytochrome P450

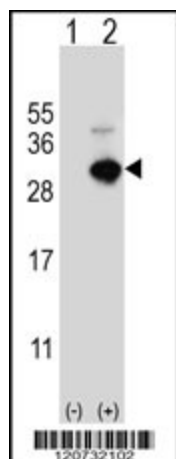


[View online »](#)

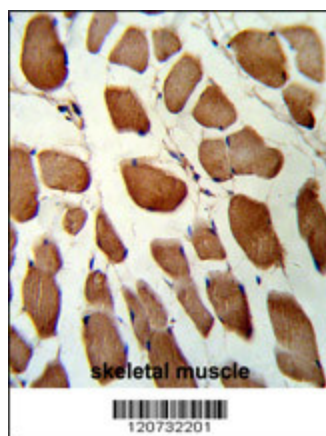
Product images:



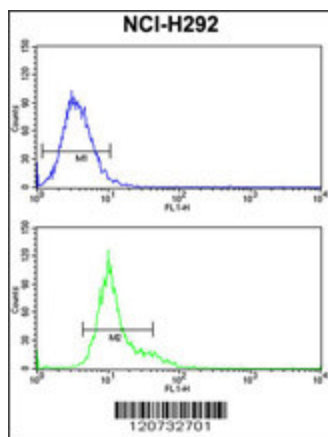
Western blot analysis of GSTO1 Antibody (Center) (Cat. # [TA324757]) in NCI-H460 cell line lysates (35ug/lane). GSTO1 (arrow) was detected using the purified Pab.



Western blot analysis of GSTO1 (arrow) using rabbit polyclonal GSTO1 Antibody (Center) (Cat. # [TA324757]). 293 cell lysates (2 ug/lane) either nontransfected (Lane 1) or transiently transfected (Lane 2) with the GSTO1 gene.



Formalin-fixed and paraffin-embedded human skeletal muscle reacted with GSTO1 Antibody (Center), which was peroxidase-conjugated to the secondary antibody, followed by DAB staining. This data demonstrates the use of this antibody for immunohistochemistry; clinical relevance has not been evaluated.



GSTO1 Antibody (Center) (Cat. #[TA324757]) flow cytometry analysis of NCI-H292 cells (bottom histogram) compared to a negative control cell (top histogram). FITC-conjugated goat-anti-rabbit secondary antibodies were used for the analysis.