

## Product datasheet for **TA324757**

### glutathione S transferase Omega 1 (GSTO1) Rabbit Polyclonal Antibody

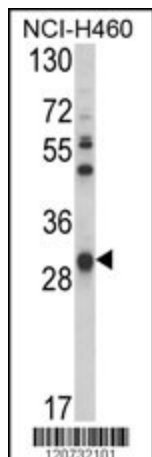
#### Product data:

|                         |                                                                                                                                                                     |
|-------------------------|---------------------------------------------------------------------------------------------------------------------------------------------------------------------|
| Product Type:           | Primary Antibodies                                                                                                                                                  |
| Applications:           | FC, IHC, WB                                                                                                                                                         |
| Recommended Dilution:   | WB: 1:1000, IHC: 1:50~100, FC: 1:10~50                                                                                                                              |
| Reactivity:             | Human                                                                                                                                                               |
| Host:                   | Rabbit                                                                                                                                                              |
| Isotype:                | IgG                                                                                                                                                                 |
| Clonality:              | Polyclonal                                                                                                                                                          |
| Immunogen:              | This GSTO1 antibody is generated from rabbits immunized with a KLH conjugated synthetic peptide between 126-155 amino acids from the Central region of human GSTO1. |
| Formulation:            | Purified polyclonal antibody supplied in PBS with 0.09% (W/V) sodium azide.                                                                                         |
| Concentration:          | lot specific                                                                                                                                                        |
| Purification:           | This antibody is prepared by Saturated Ammonium Sulfate (SAS) precipitation followed by dialysis against PBS.                                                       |
| Conjugation:            | Unconjugated                                                                                                                                                        |
| Storage:                | Store at -20°C as received.                                                                                                                                         |
| Stability:              | Stable for 12 months from date of receipt.                                                                                                                          |
| Predicted Protein Size: | 27566 Da                                                                                                                                                            |
| Gene Name:              | glutathione S-transferase omega 1                                                                                                                                   |
| Database Link:          | <a href="#">NP_001177931</a><br><a href="#">Entrez Gene 9446 Human</a><br><a href="#">P78417</a>                                                                    |
| Synonyms:               | GSTO 1-1; GSTTLp28; HEL-S-21; P28; SPG-R                                                                                                                            |
| Protein Families:       | Druggable Genome                                                                                                                                                    |
| Protein Pathways:       | Drug metabolism - cytochrome P450, Glutathione metabolism, Metabolism of xenobiotics by cytochrome P450                                                             |

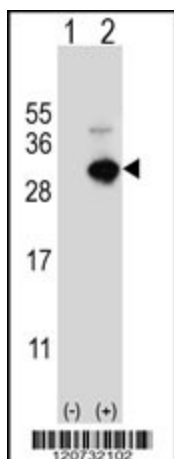


[View online »](#)

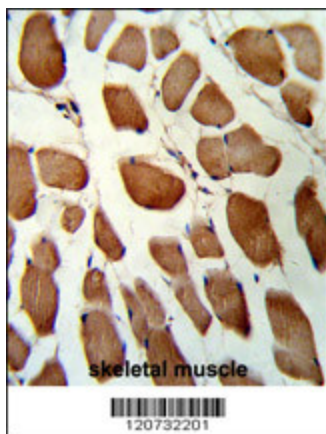
**Product images:**



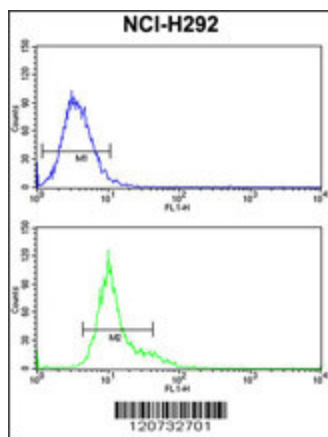
Western blot analysis of GSTO1 Antibody (Center) (Cat. #TA324757) in NCI-H460 cell line lysates (35ug/lane). GSTO1 (arrow) was detected using the purified Pab.



Western blot analysis of GSTO1 (arrow) using rabbit polyclonal GSTO1 Antibody (Center) (Cat. #TA324757). 293 cell lysates (2 ug/lane) either nontransfected (Lane 1) or transiently transfected (Lane 2) with the GSTO1 gene.



Formalin-fixed and paraffin-embedded human skeletal muscle reacted with GSTO1 Antibody (Center), which was peroxidase-conjugated to the secondary antibody, followed by DAB staining. This data demonstrates the use of this antibody for immunohistochemistry; clinical relevance has not been evaluated.



GSTO1 Antibody (Center) (Cat. #TA324757) flow cytometry analysis of NCI-H292 cells (bottom histogram) compared to a negative control cell (top histogram). FITC-conjugated goat-anti-rabbit secondary antibodies were used for the analysis.