

## Product datasheet for **TA324755**

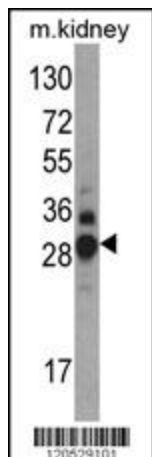
### DDAH1 Rabbit Polyclonal Antibody

#### Product data:

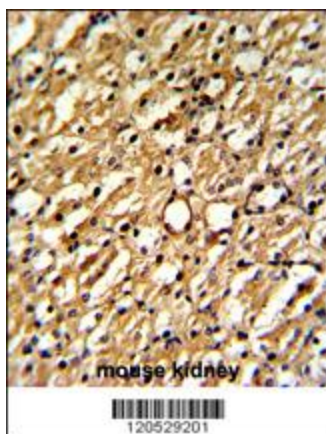
Product Type:	Primary Antibodies
Applications:	FC, IF, IHC, WB
Recommended Dilution:	IHC: 1:50~100, WB: 1:1000, FC: 1:10~50, IF: 1:10~50
Reactivity:	Human, Mouse (Predicted: Rat, Bovine)
Host:	Rabbit
Isotype:	IgG
Clonality:	Polyclonal
Immunogen:	This DDAH1 antibody is generated from rabbits immunized with a KLH conjugated synthetic peptide between 221-250 amino acids from the C-terminal region of human DDAH1.
Formulation:	Purified polyclonal antibody supplied in PBS with 0.09% (W/V) sodium azide.
Concentration:	lot specific
Purification:	This antibody is prepared by Saturated Ammonium Sulfate (SAS) precipitation followed by dialysis against PBS.
Conjugation:	Unconjugated
Storage:	Store at -20°C as received.
Stability:	Stable for 12 months from date of receipt.
Predicted Protein Size:	31122 Da
Gene Name:	dimethylarginine dimethylaminohydrolase 1
Database Link:	<a href="#">NP_001127917</a> <a href="#">Entrez Gene 64157 Rat</a> <a href="#">Entrez Gene 69219 Mouse</a> <a href="#">Entrez Gene 23576 Human</a> <a href="#">O94760</a>
Synonyms:	DDAH; DDAH-1; DDAHI; HEL-S-16



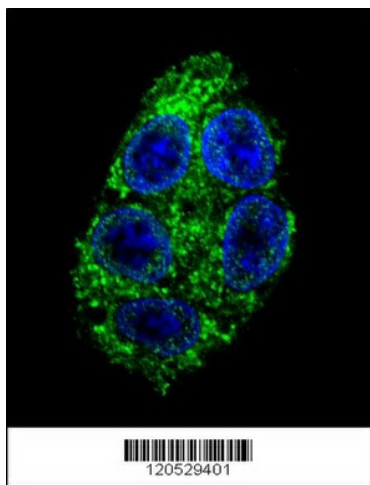
[View online »](#)

**Product images:**

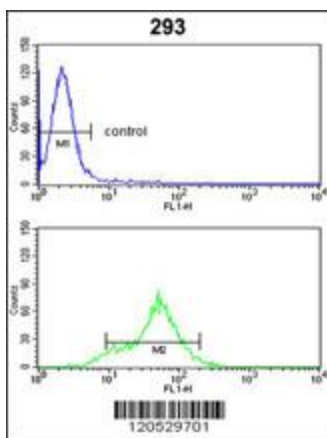
Western blot analysis of DDAH1 Antibody (C-term) (Cat. #TA324755) in mouse kidney tissue lysates (35ug/lane). DDAH1 (arrow) was detected using the purified Pab.



Formalin-fixed and paraffin-embedded mouse kidney reacted with DDAH1 Antibody (C-term), which was peroxidase-conjugated to the secondary antibody, followed by DAB staining. This data demonstrates the use of this antibody for immunohistochemistry; clinical relevance has not been evaluated.



Confocal immunofluorescent analysis of DDAH1 Antibody (C-term) (Cat#TA324755) with HepG2 cell followed by Alexa Fluor 488-conjugated goat anti-rabbit IgG (green). DAPI was used to stain the cell nuclear (blue).



DDAH1 Antibody (C-term) (Cat. #TA324755) flow cytometric analysis of 293 cells (bottom histogram) compared to a negative control cell (top histogram). FITC-conjugated goat-anti-rabbit secondary antibodies were used for the analysis.